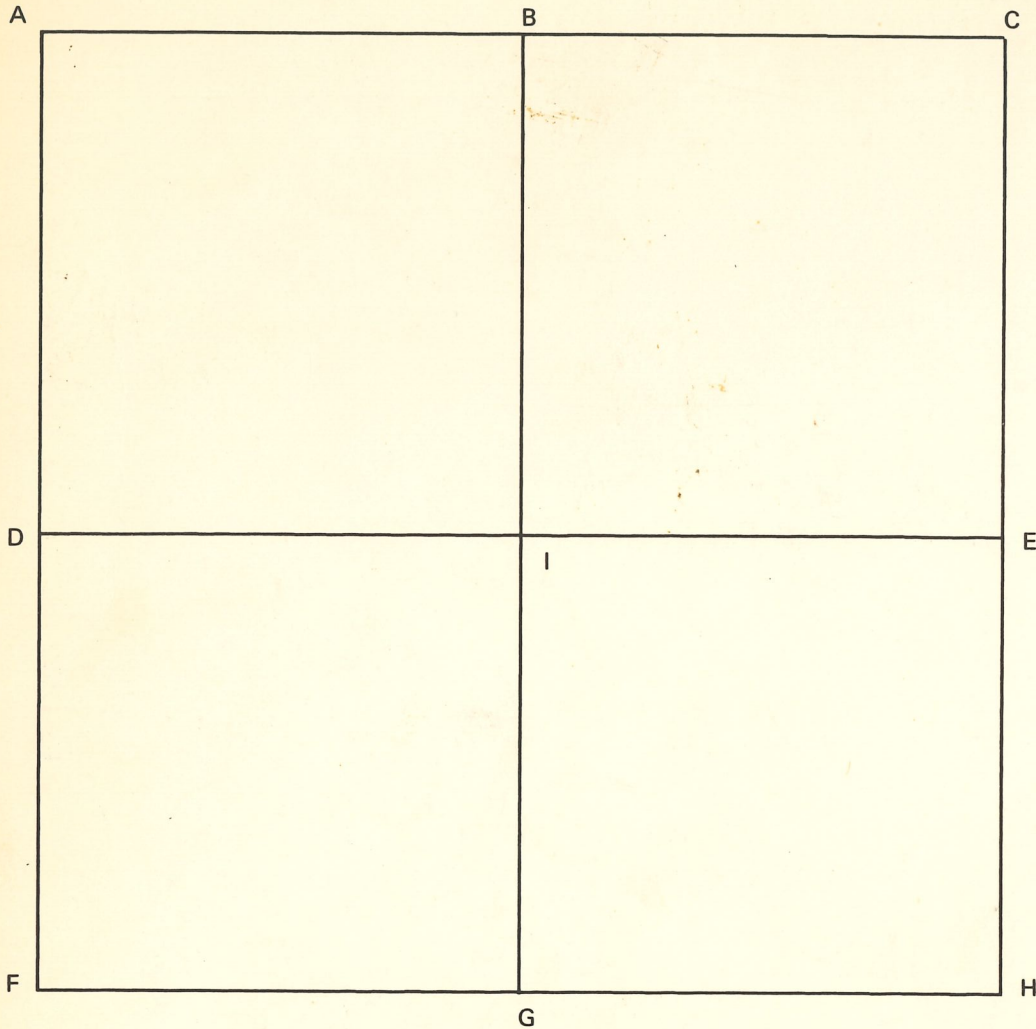
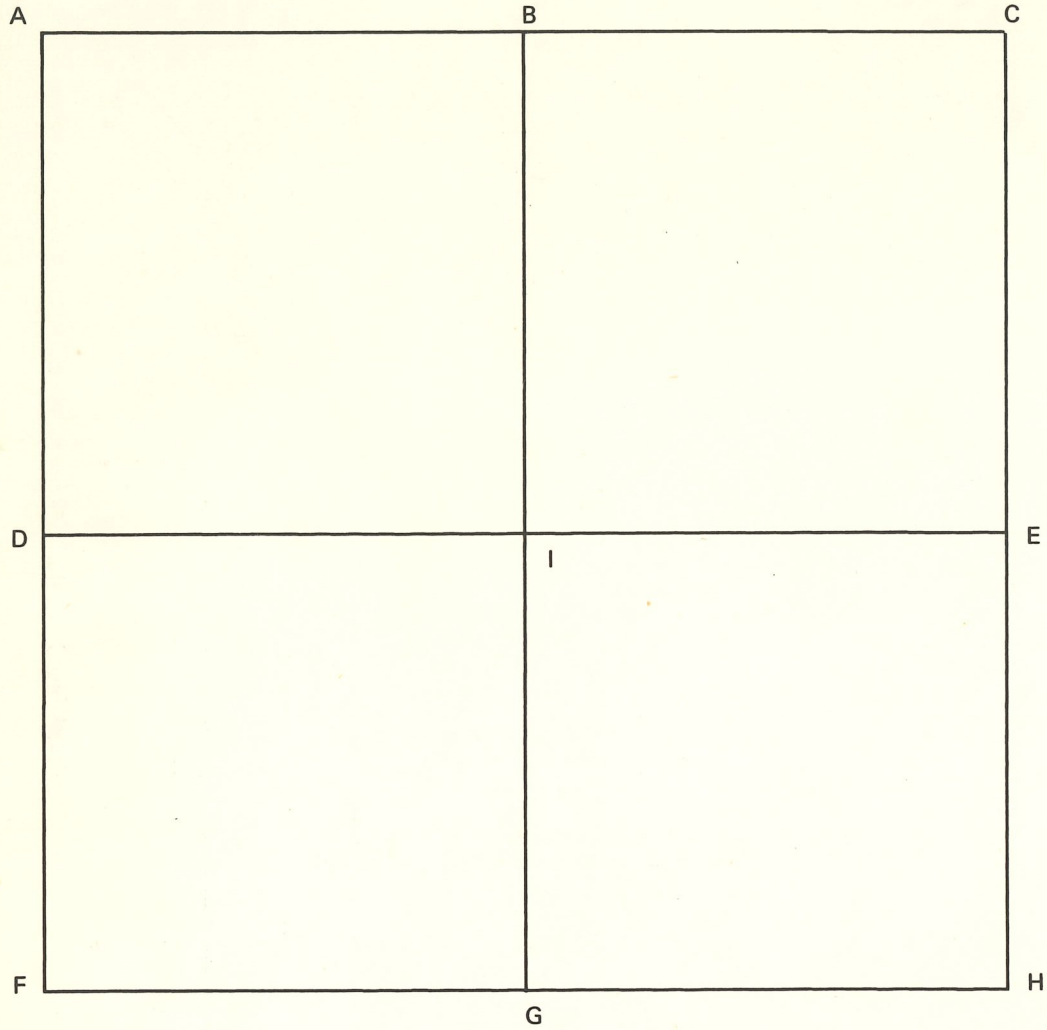


**CORNER CODE SYSTEM**  
**Warrick County**



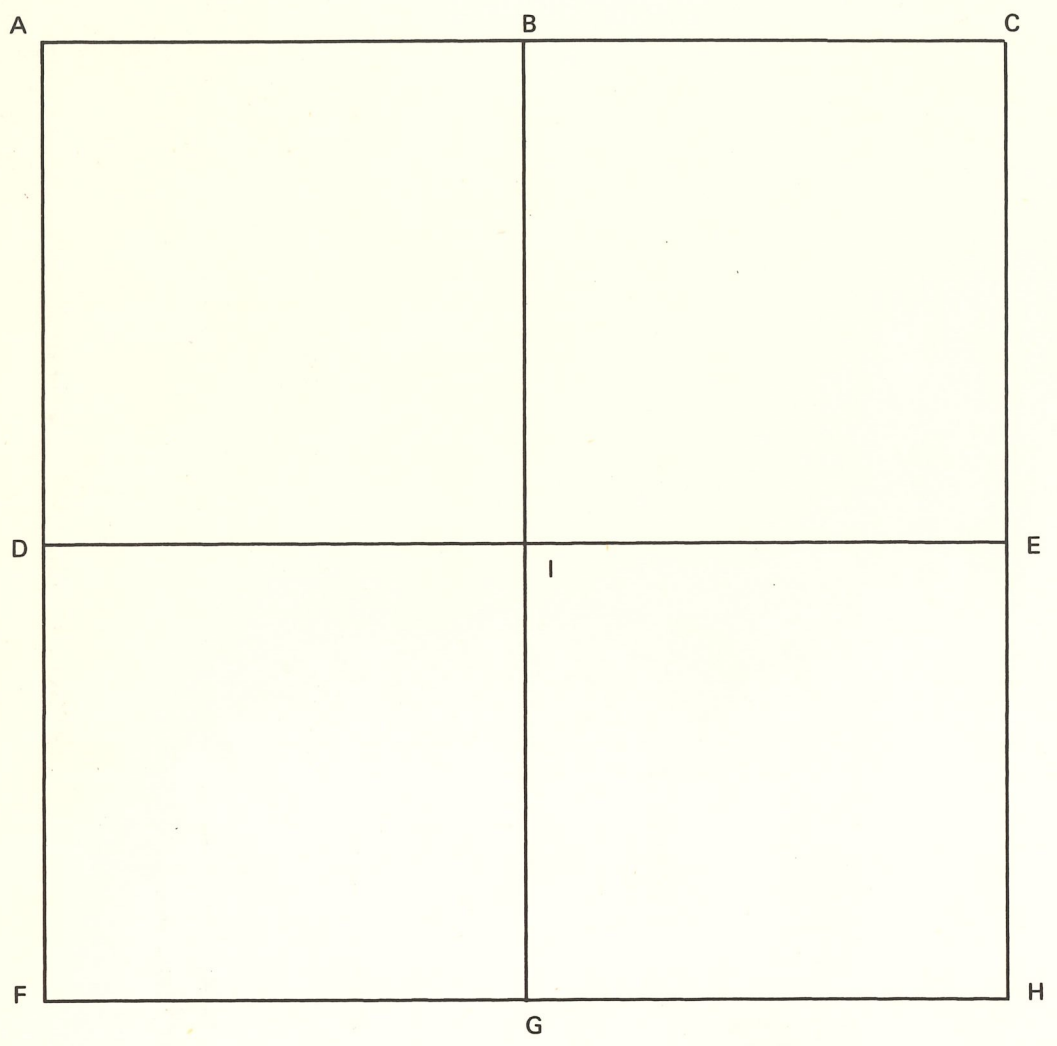
**NOTES**

**CORNER CODE SYSTEM**  
**Warrick County**



NOTES

**CORNER CODE SYSTEM**  
**Warrick County**



**NOTES**

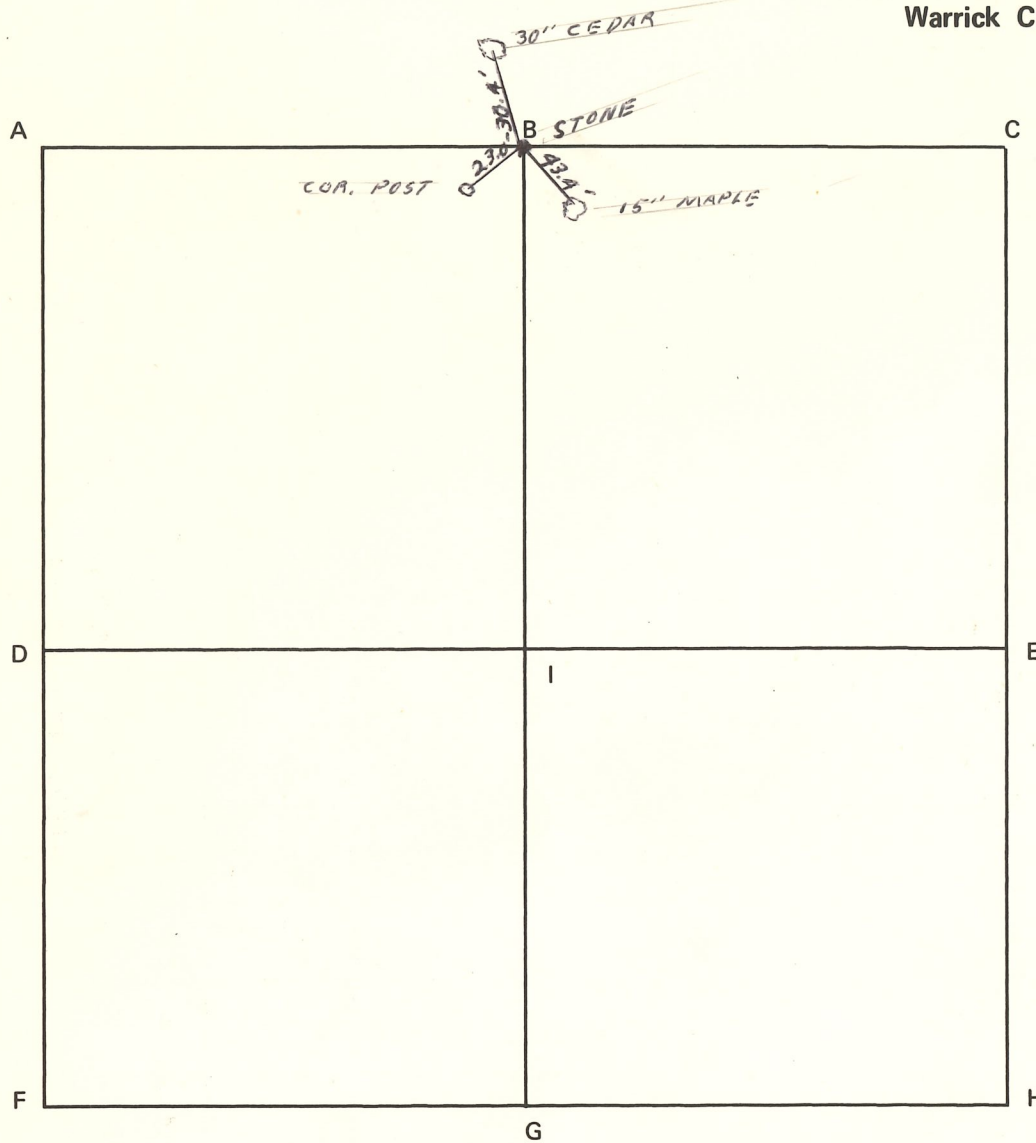
Section 4

Township 5 South

Range 8 West

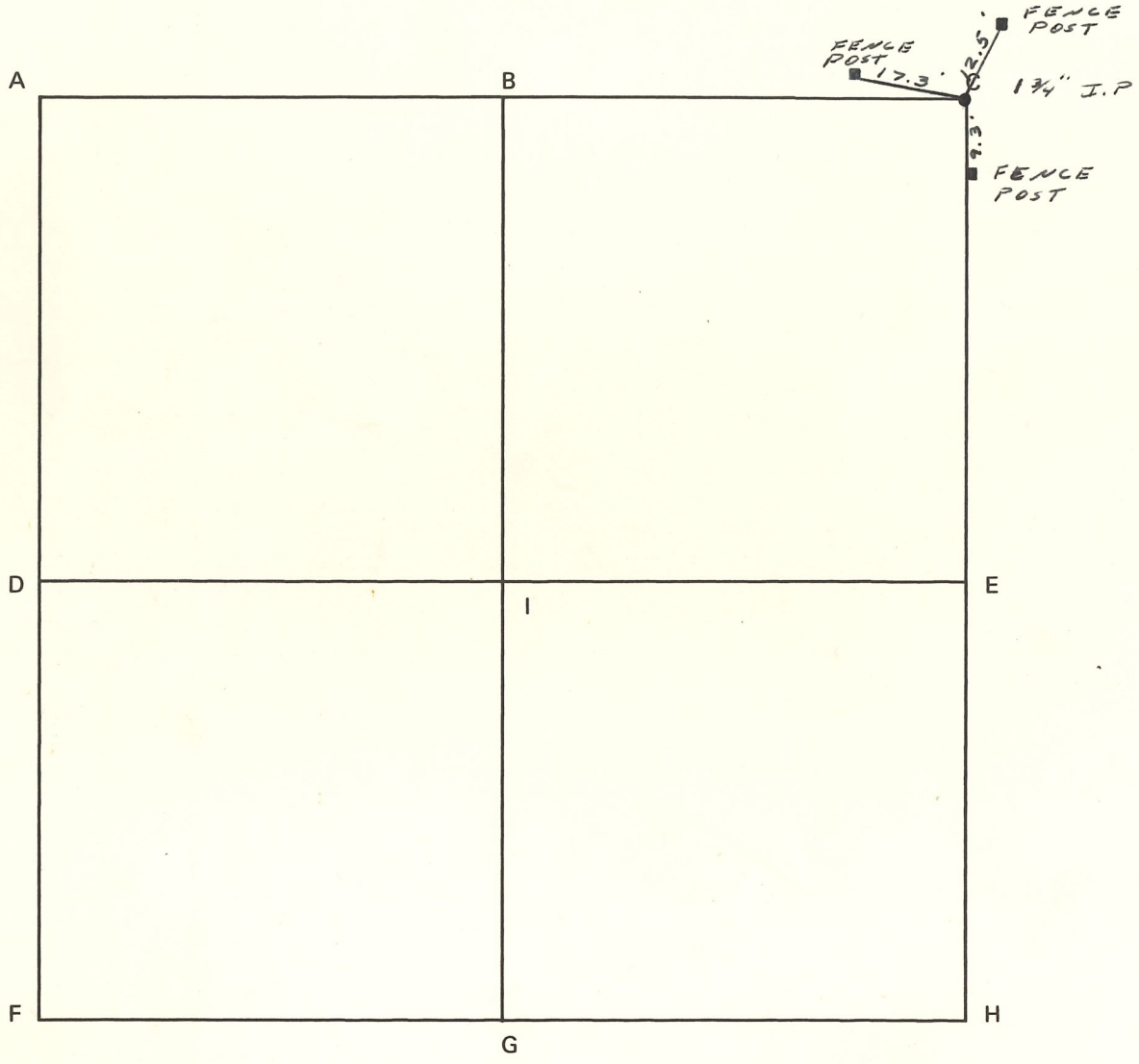
2nd P

**CORNER CODE SYSTEM**  
Warrick County



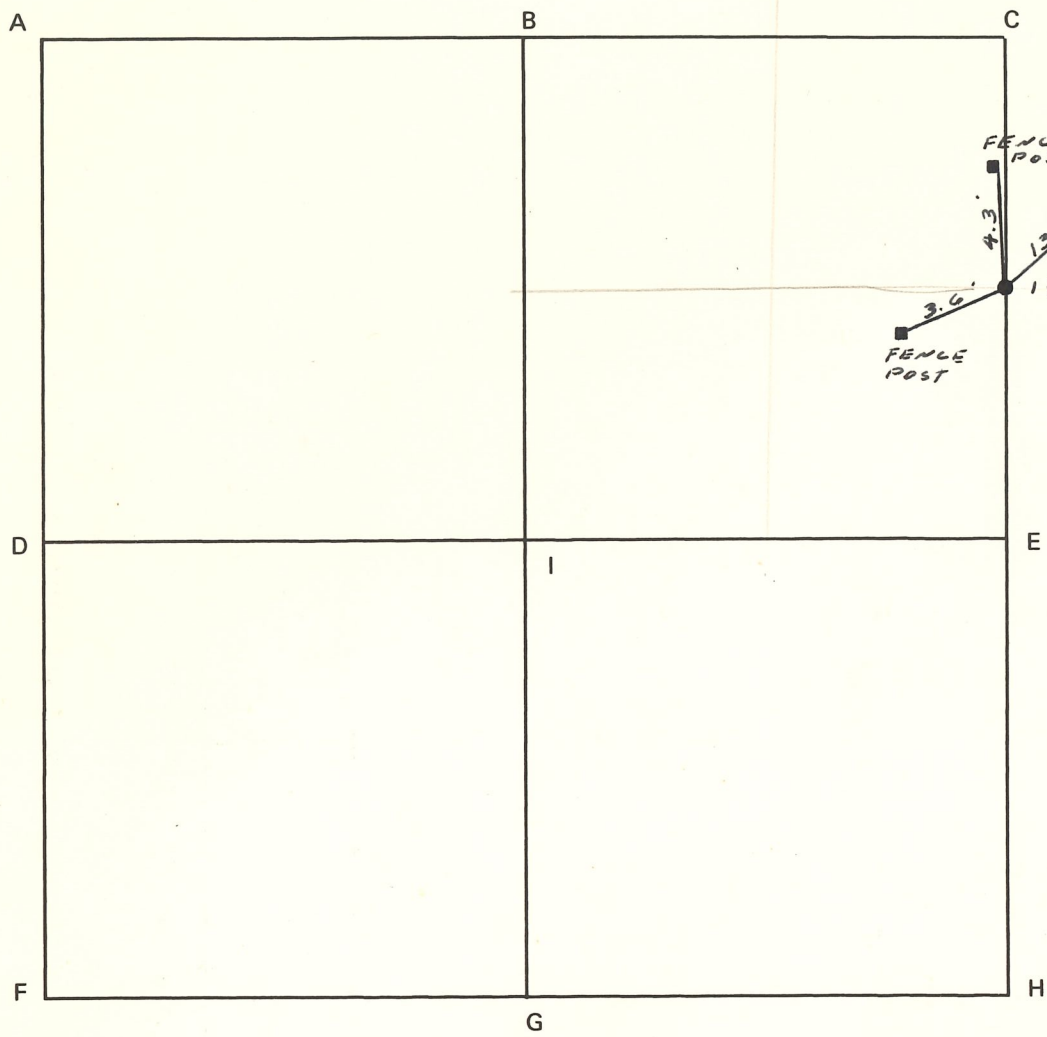
NOTES

**CORNER CODE SYSTEM**  
**Warrick County**



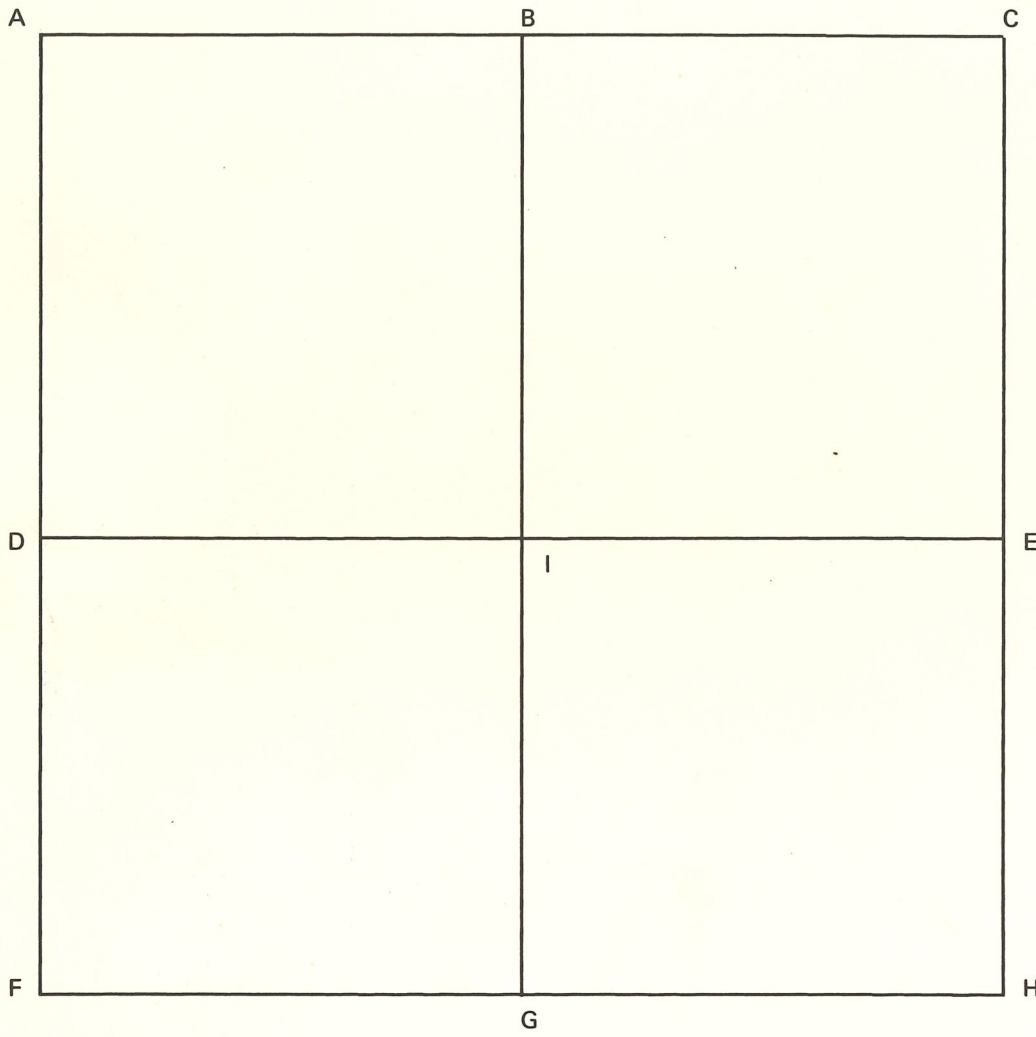
NOTES

**CORNER CODE SYSTEM**  
**Warrick County**



NOTES

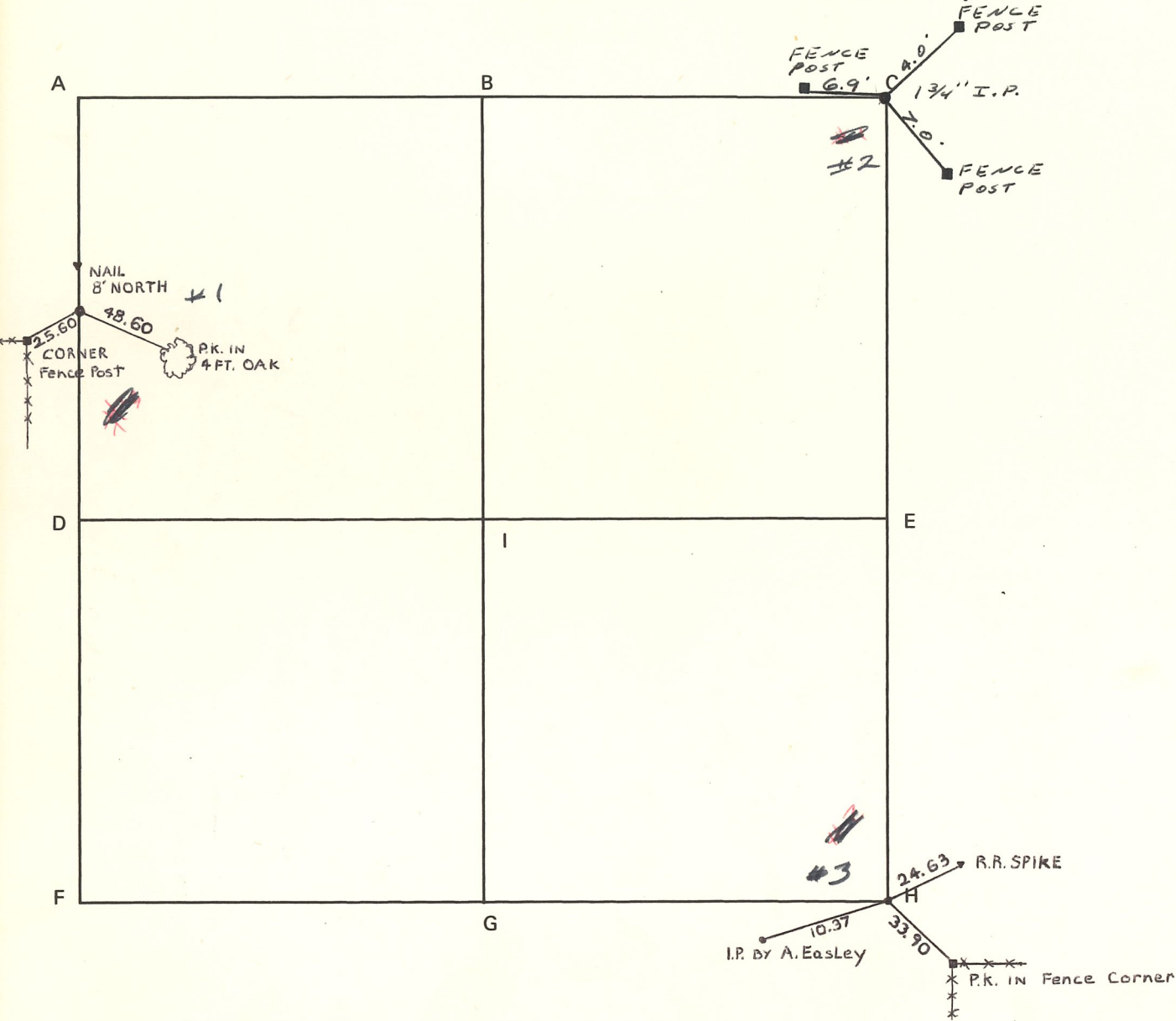
**CORNER CODE SYSTEM**  
**Warrick County**



NOTES

CORNER CODE SYSTEM  
Warrick County

NOTES





RECORD OF SECTION CORNERS

Warrick County

5 South

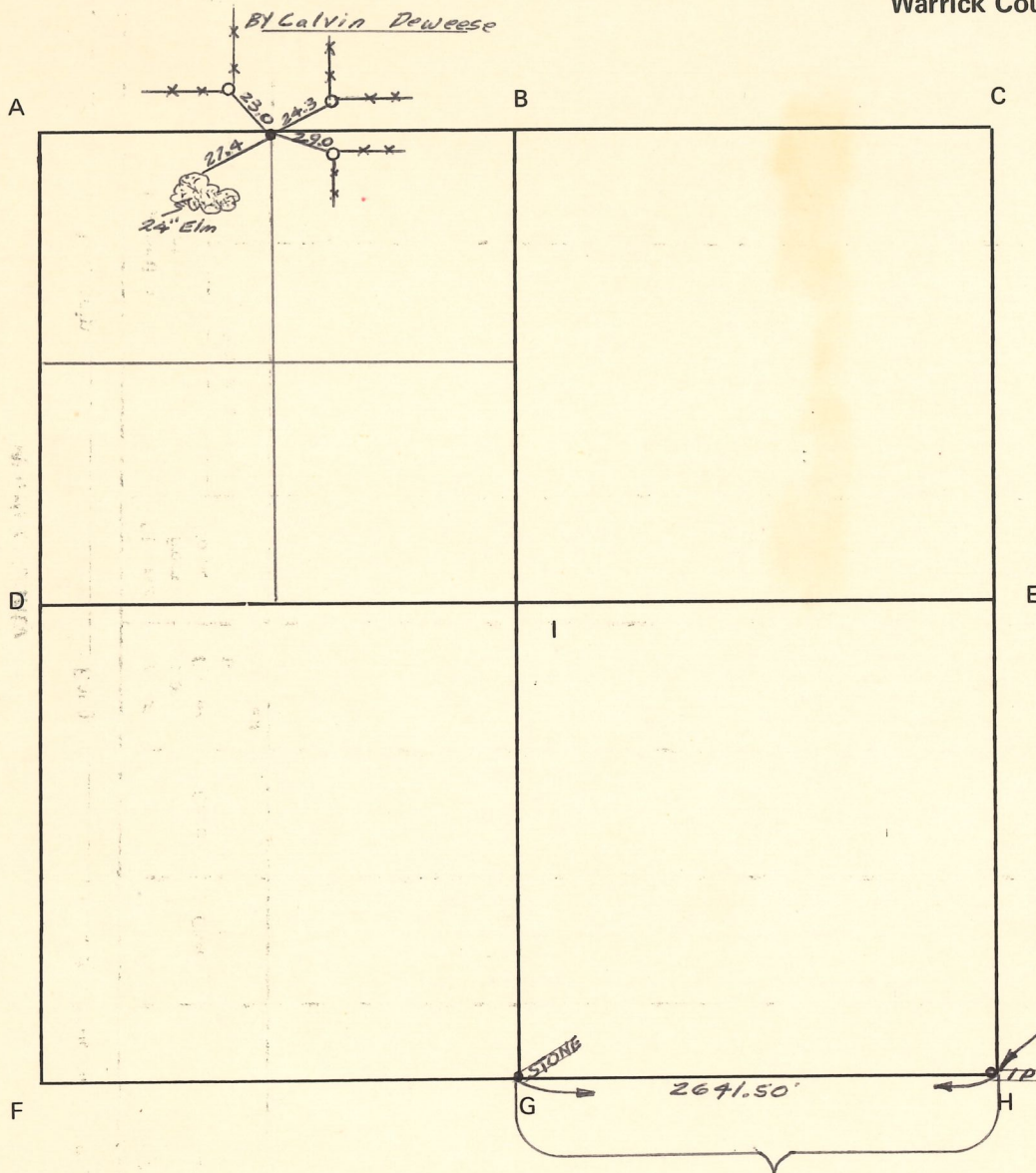
8 West

tion \_\_\_\_\_ Township \_\_\_\_\_ Range \_\_\_\_\_ 2nd Principle Meridian \_\_\_\_\_

8

Date	Cor	Location	Description of		Distance from Corner	Bearing from Corner (North Assumed)	Cond	Check By	Remarks
			Monument	Reference					
10/1/73			iron pin	nail 8'N.	8'				SWC
				fence post	25.60				SWcor. NW1/4
			p.k. 4'oak		48.60				NW 1/4 N475&E100 rd.
10/1/73	H		iron pin	R.R.spike	24.63				SWC
				pk in fence	33.90				N400&E200 rd.
			iron pin		10.37				by EASLY

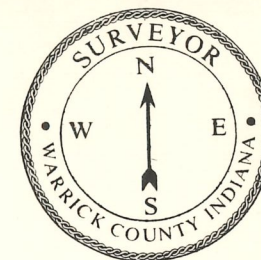
CORNER CODE SYSTEM  
Warrick County



NOTES

By Co. Rd. Plans  
Calvin Deweese  
Surveyor Warrick Co.

**CORNER RECORD  
WARRICK COUNTY**

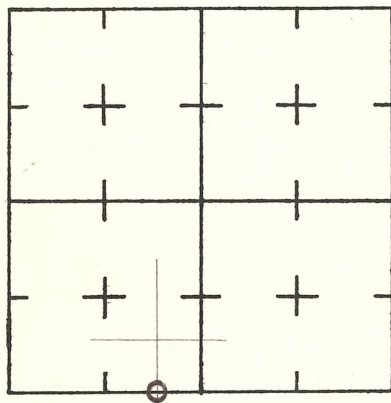


DESCRIPTION:

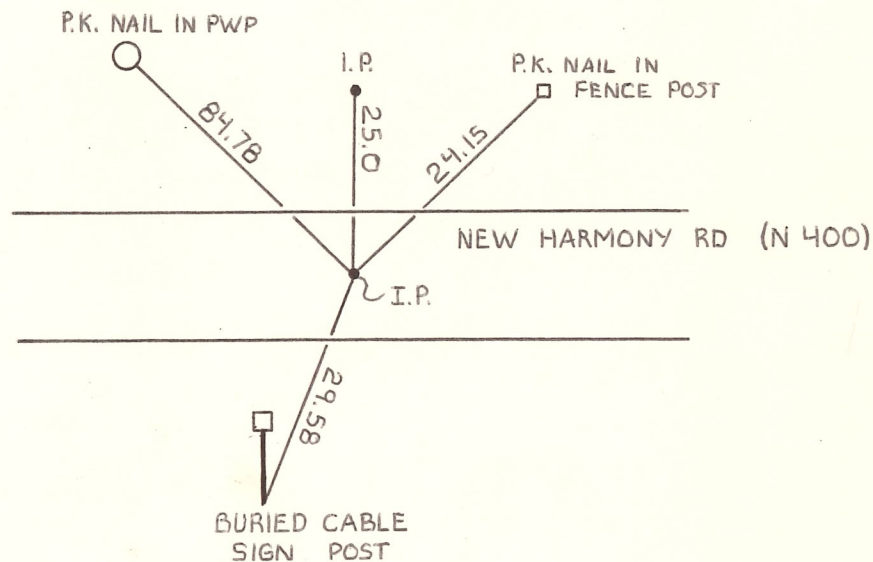
SE CORNER SW 1/4 SE 1/4 SW 1/4  
SECTION 10, T. 5 S. R. 8 W.  
2<sup>nd</sup> PRINCIPLE MERIDIAN

**WARRICK COUNTY SURVEYOR  
MICHAEL IRVIN**

INDICATE CORNER REFERENCED



DESCRIBE CORNER REFERENCED



STATE PLANE COORDINATE DATA

INDIANA ZONE: WEST

X \_\_\_\_\_

Y \_\_\_\_\_

ESTABLISHED BY:  
\_\_\_\_\_

APPROVED BY NOT VERIFIED

DATE  
6-21-73

REFERENCED BY:

DATE

000013

SE corner SW $\frac{1}{4}$  SE $\frac{1}{4}$  SW $\frac{1}{4}$  sec. 10-T5S-R8W

Also SW corner SE $\frac{1}{4}$  SE $\frac{1}{4}$  SW $\frac{1}{4}$  s10 T5S R8W

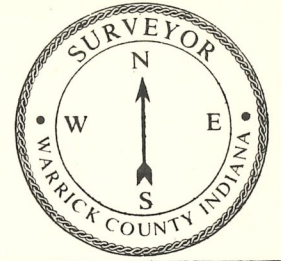
Set on hill top with SE corner & SW corner of section  
visible

Type of Monument: I.P.

Date referenced: 6-21-73

referenced by: SWC

CORNER RECORD  
WARRICK COUNTY



DESCRIPTION:

SE CORNER \_\_\_\_\_

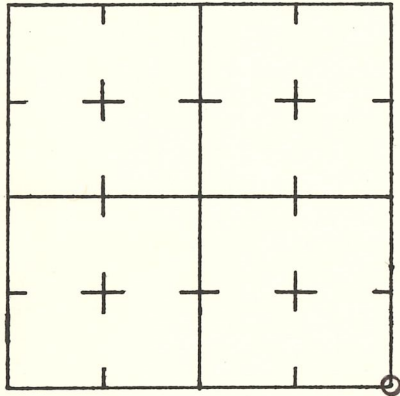
SECTION 10, T. 5 S. R. 8 W.

2<sup>nd</sup> PRINCIPLE MERIDIAN

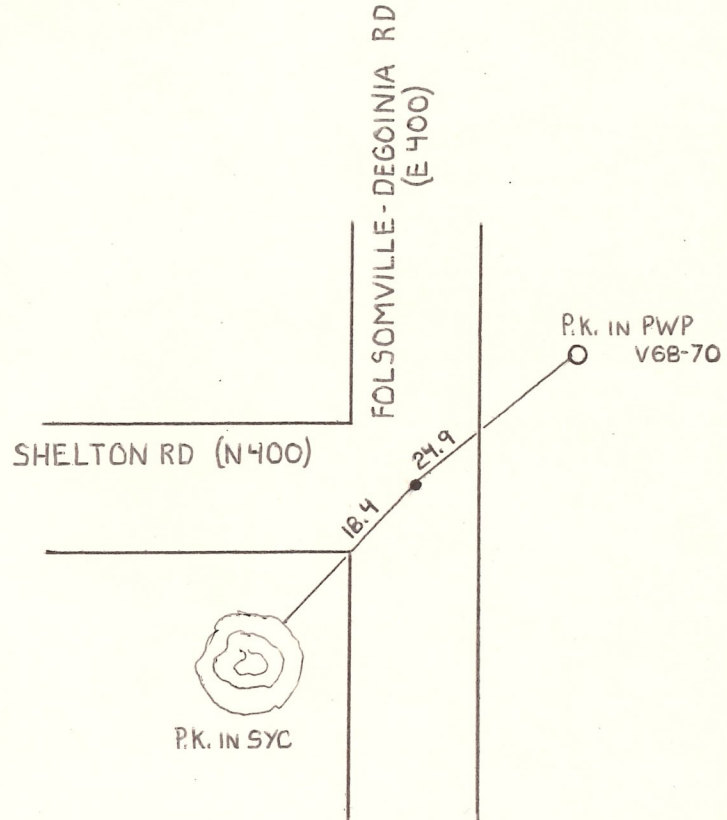
WARRICK COUNTY SURVEYOR

MICHAEL IRVIN

INDICATE CORNER REFERENCED



DESCRIBE CORNER REFERENCED



STATE PLANE COORDINATE DATA

INDIANA ZONE: WEST

X \_\_\_\_\_

Y \_\_\_\_\_

ESTABLISHED BY:

\_\_\_\_\_

APPROVED BY

DATE  
1-5-73

REFERENCED BY:

DATE

000002

SE CORNER - SECT 10-5-8

SW CORNER - SECT 11-5-8

NE CORNER - SECT 15-5-8

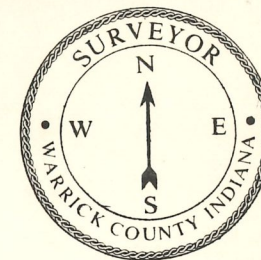
NW CORNER - SECT 14-5-8

Type of monument - I.P.

DATE - 1-5-73

REFERENCED BY - SWC

CORNER RECORD  
WARRICK COUNTY



DESCRIPTION:

SW CORNER \_\_\_\_\_

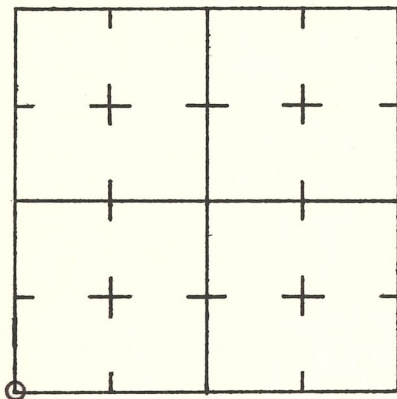
SECTION 10, T. 5 S. R. 8 W.

2<sup>nd</sup> PRINCIPLE MERIDIAN

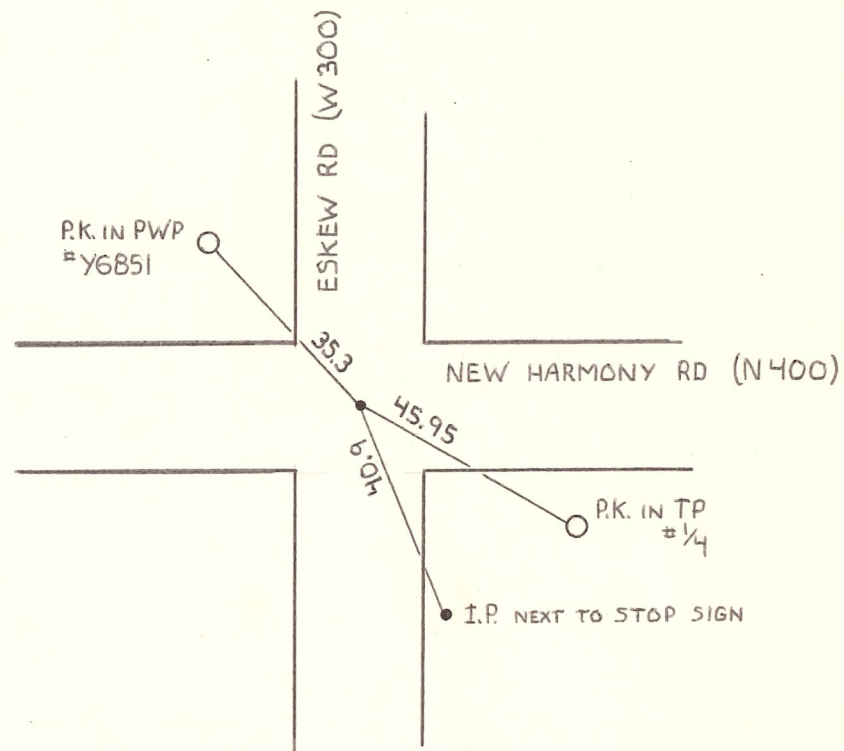
WARRICK COUNTY SURVEYOR

MICHAEL IRVIN

INDICATE CORNER REFERENCED



DESCRIBE CORNER REFERENCED



STATE PLANE COORDINATE DATA

INDIANA ZONE: WEST

X \_\_\_\_\_

Y \_\_\_\_\_

ESTABLISHED BY:

APPROVED BY

DATE  
5-8-73

REFERENCED BY:

DATE

000012

~~SE corner of section 9-53-8w~~  
~~(SW corner of section 10-53-8w)~~  
NE corner of section 16-53-8w  
NW corner of section 15-53-8w

Type of Monument: J. P.

Date referenced: 5/8/73

referenced by SWC

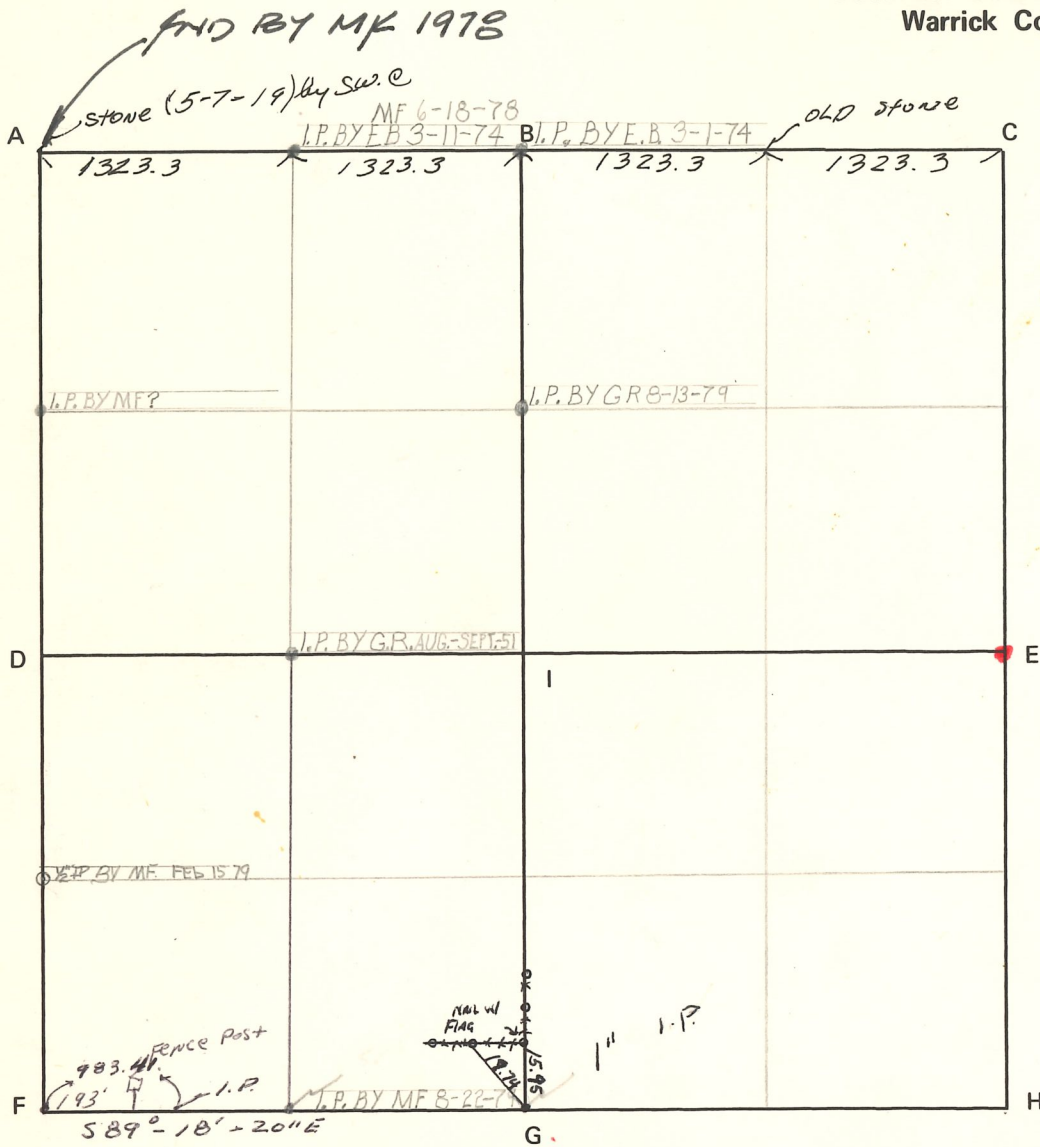
Amended  
11/1/75  
gets



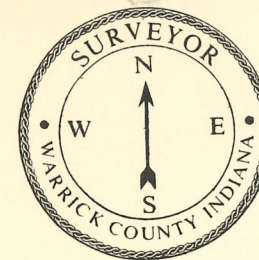


CORNER CODE SYSTEM  
Warrick County

NOTES



**CORNER RECORD  
WARRICK COUNTY**



DESCRIPTION :

SW CORNER \_\_\_\_\_

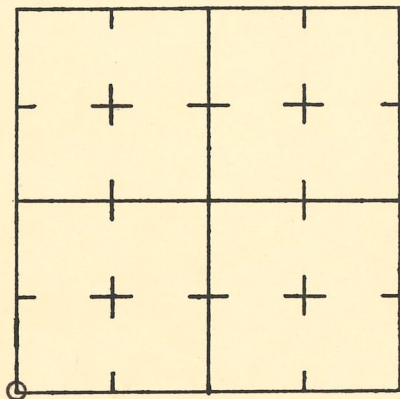
SECTION 12, T. 5 S. R. 8 W.

2<sup>nd</sup> PRINCIPLE MERIDIAN

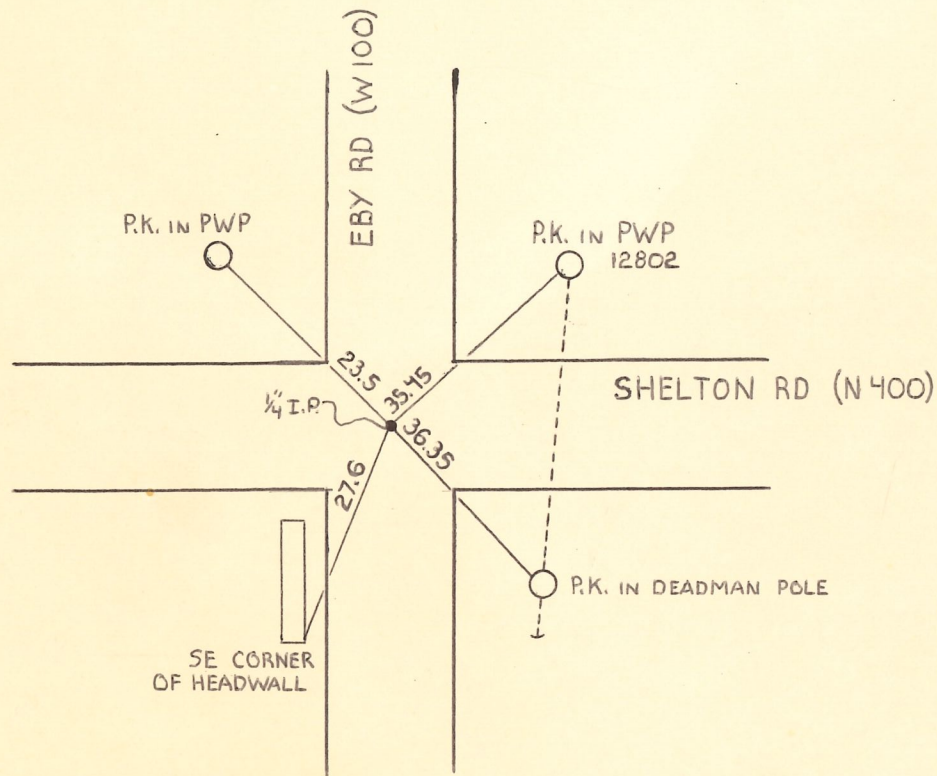
**WARRICK COUNTY SURVEYOR**

**MICHAEL IRVIN**

INDICATE CORNER REFERENCED



DESCRIBE CORNER REFERENCED



NOT VERIFIED

STATE PLANE COORDINATE DATA

INDIANA ZONE: WEST

X \_\_\_\_\_

Y \_\_\_\_\_

ESTABLISHED BY:

\_\_\_\_\_

APPROVED BY

DATE  
6-22-73

REFERENCED BY:

DATE

SW cor 12-5-8

000014

SE cor 11-5-8

NE cor 14-5-8

NW cor 13-5-8

Type of Monument: I.P. ( $\frac{1}{4}$  inch)

Date referenced: 6-22-73

referenced by: SWC

CORNER RECORD  
WARRICK COUNTY

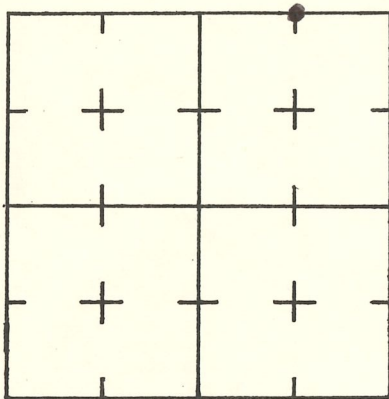
DESCRIPTION:

NW CORNER ~~NE 1/4~~ ~~NE 1/4~~  
SECTION 13, T. 5 S. R. 8 W.  
2<sup>nd</sup> PRINCIPAL MERIDIAN

WARRICK COUNTY SURVEYOR  
MICHAEL F. FELDBUSCH, L.S.

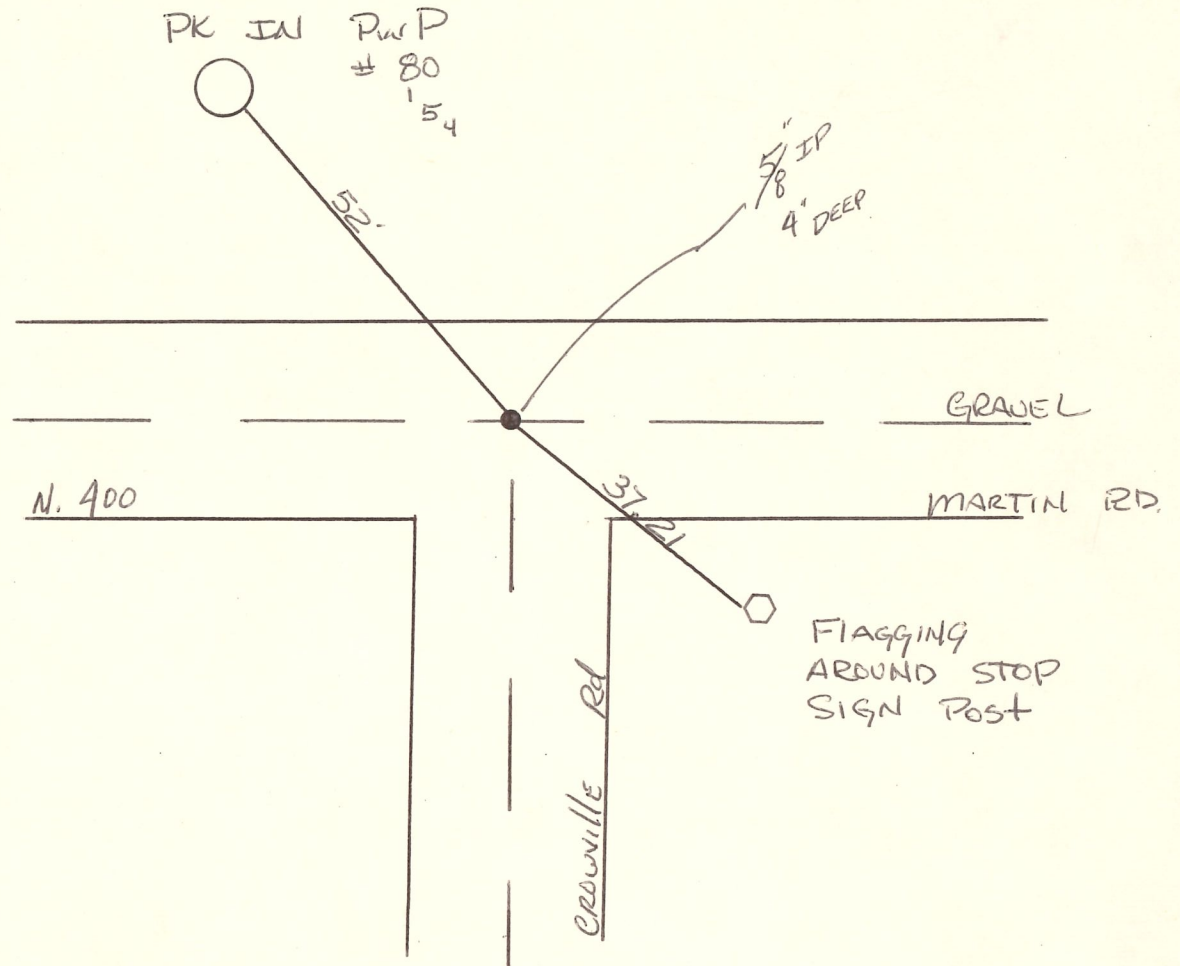


INDICATE CORNER REFERENCED



DESCRIBE CORNER REFERENCED

**NOT VERIFIED**



STATE PLANE COORDINATE DATA

INDIANA ZONE: WEST

X \_\_\_\_\_

Y \_\_\_\_\_

ESTABLISHED BY:  
\_\_\_\_\_

APPROVED BY

DATE

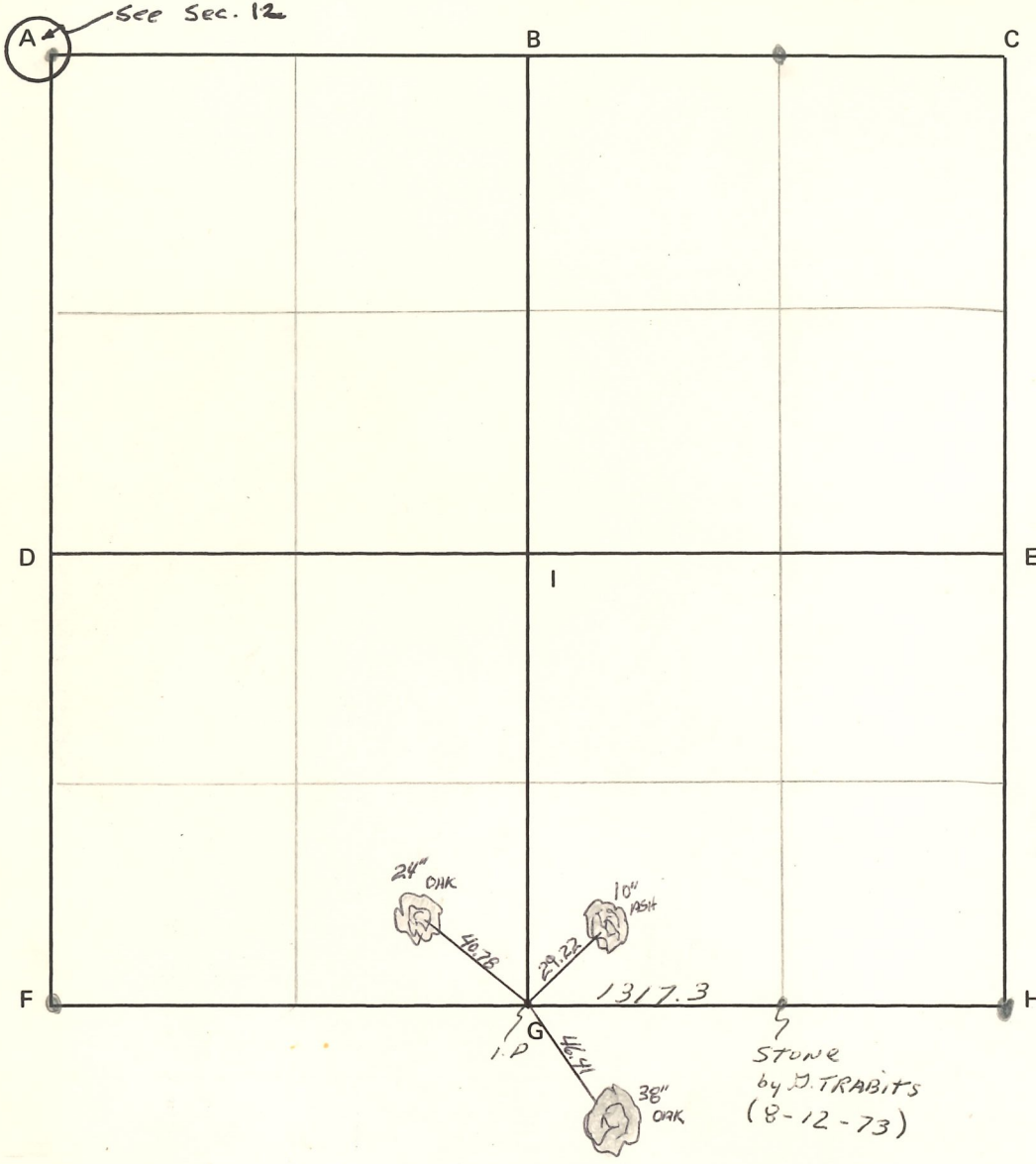
REFERENCED BY:

DATE

*Larry Beck*

2-1-84

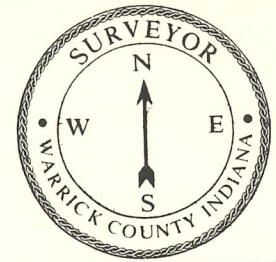
**CORNER CODE SYSTEM**  
Warrick County



NOTES

STONE  
by D. TRABITS  
(8-12-73)

CORNER RECORD  
WARRICK COUNTY



DESCRIPTION:

NW CORNER SW<sup>1</sup>/<sub>4</sub> SW<sup>1</sup>/<sub>4</sub>

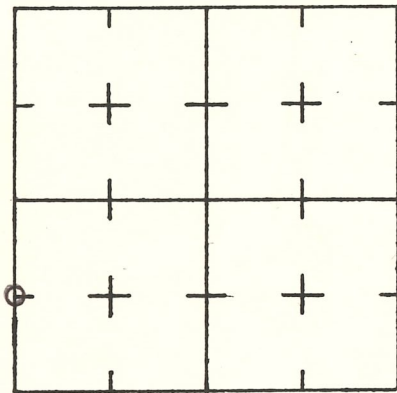
SECTION 13, T. 5 S. R. 8 W.

2<sup>nd</sup> PRINCIPLE MERIDIAN

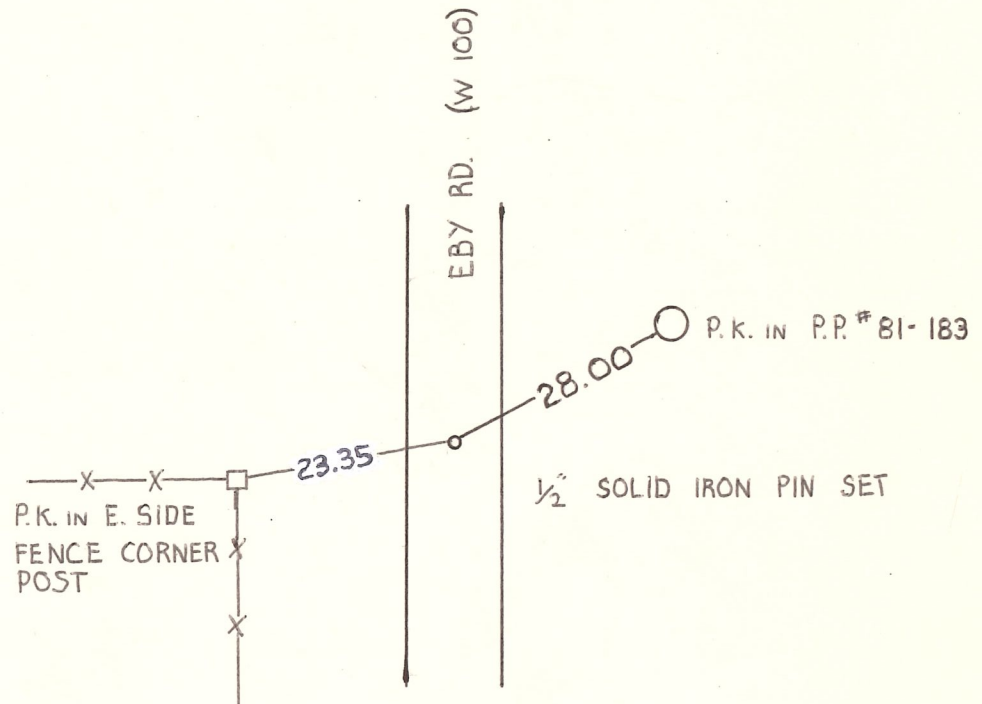
WARRICK COUNTY SURVEYOR

MICHAEL IRVIN

INDICATE CORNER REFERENCED



DESCRIBE CORNER REFERENCED



STATE PLANE COORDINATE DATA

INDIANA ZONE: WEST

X \_\_\_\_\_

Y \_\_\_\_\_

ESTABLISHED BY:

\_\_\_\_\_

APPROVED BY

E. DOCKERY R.L.S. 9920

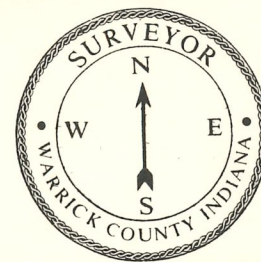
DATE

REFERENCED BY:

E. DOCKERY

DATE

**CORNER RECORD  
WARRICK COUNTY**



DESCRIPTION:

NE CORNER SW<sup>1</sup>/<sub>4</sub>

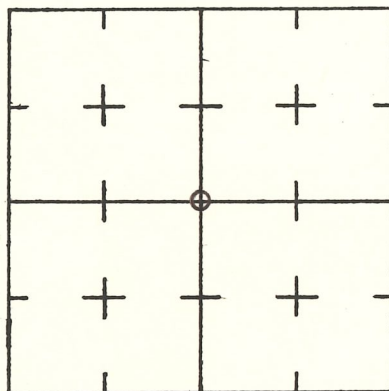
SECTION 13, T. 5 S. R. 8 W.

2<sup>nd</sup> PRINCIPLE MERIDIAN

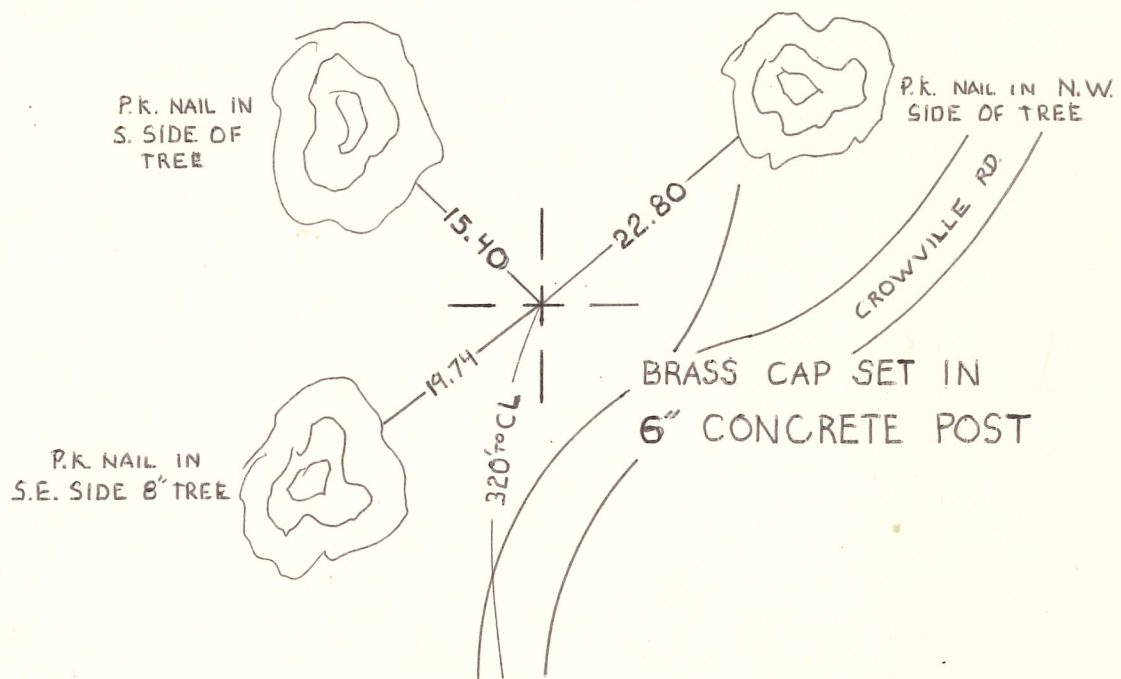
**WARRICK COUNTY SURVEYOR**

**MICHAEL IRVIN**

INDICATE CORNER REFERENCED



DESCRIBE CORNER REFERENCED



STATE PLANE COORDINATE DATA

INDIANA ZONE: WEST

X \_\_\_\_\_

Y \_\_\_\_\_

ESTABLISHED BY:

\_\_\_\_\_

APPROVED BY

E. DOCKERY R.L.S. 9920

DATE

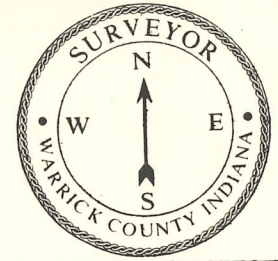
REFERENCED BY:

E. DOCKERY

DATE



CORNER RECORD  
WARRICK COUNTY



DESCRIPTION:

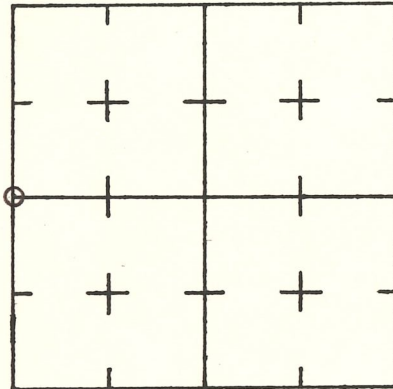
NW CORNER SW<sup>1</sup>/<sub>4</sub>

SECTION 13, T. 5 S. R. 8 W.

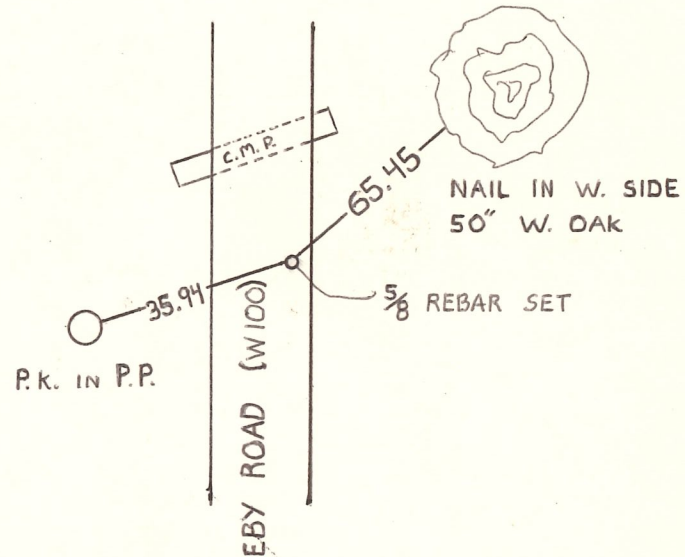
2<sup>nd</sup> PRINCIPLE MERIDIAN

WARRICK COUNTY SURVEYOR  
MICHAEL IRVIN

INDICATE CORNER REFERENCED



DESCRIBE CORNER REFERENCED



STATE PLANE COORDINATE DATA

INDIANA ZONE: WEST

X \_\_\_\_\_

Y \_\_\_\_\_

ESTABLISHED BY:

APPROVED BY

E. DOCKERY R.L.S. 9920

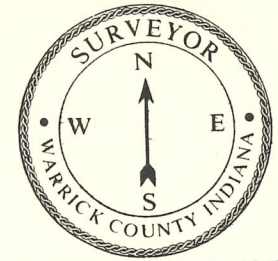
DATE

REFERENCED BY:

E. DOCKERY

DATE

CORNER RECORD  
WARRICK COUNTY



DESCRIPTION:

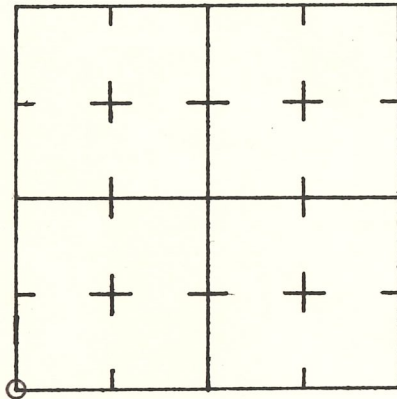
SW CORNER SW<sup>1</sup>/<sub>4</sub>

SECTION 13, T. 5 S. R. 8 W.

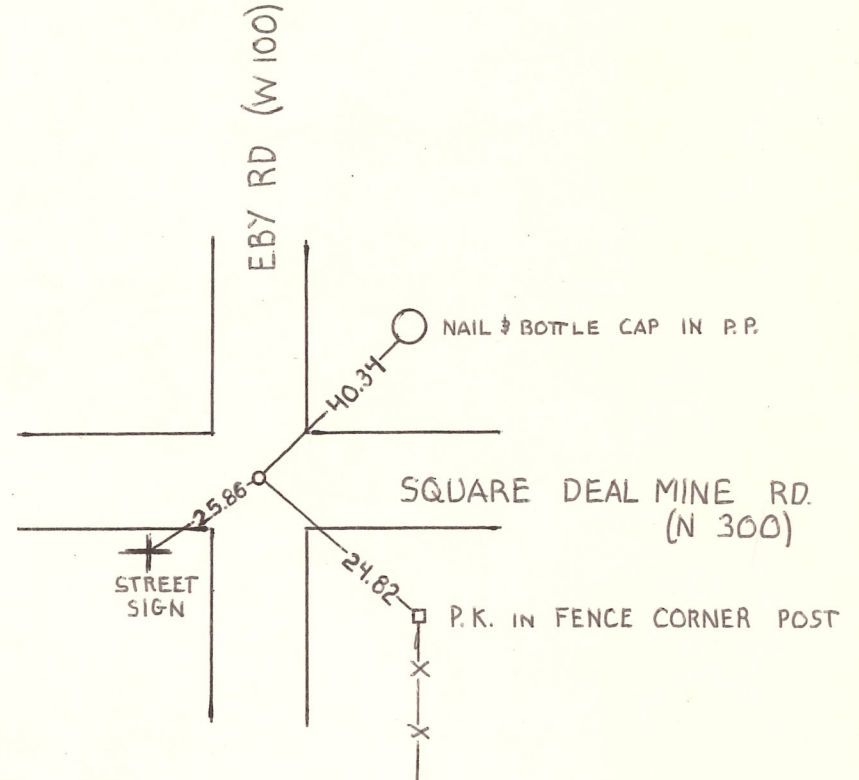
2<sup>nd</sup> PRINCIPLE MERIDIAN

WARRICK COUNTY SURVEYOR  
MICHAEL IRVIN

INDICATE CORNER REFERENCED



DESCRIBE CORNER REFERENCED



STATE PLANE COORDINATE DATA

INDIANA ZONE: WEST

X \_\_\_\_\_

Y \_\_\_\_\_

ESTABLISHED BY:

APPROVED BY

E. DOCKERY R.L.S. 9920

DATE

REFERENCED BY:

E. DOCKERY

DATE

CORNER RECORD  
WARRICK COUNTY



DESCRIPTION:

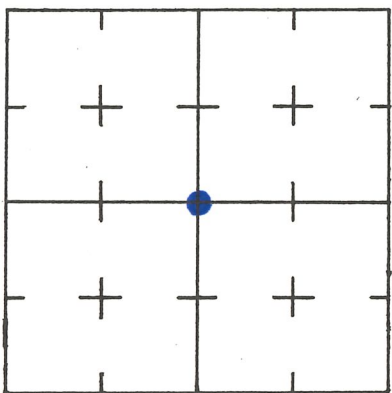
SE CORNER SE 1/4 NW 1/4

SECTION 13, T. 5 S. R. 8 W.

2<sup>nd</sup> PRINCIPLE MERIDIAN

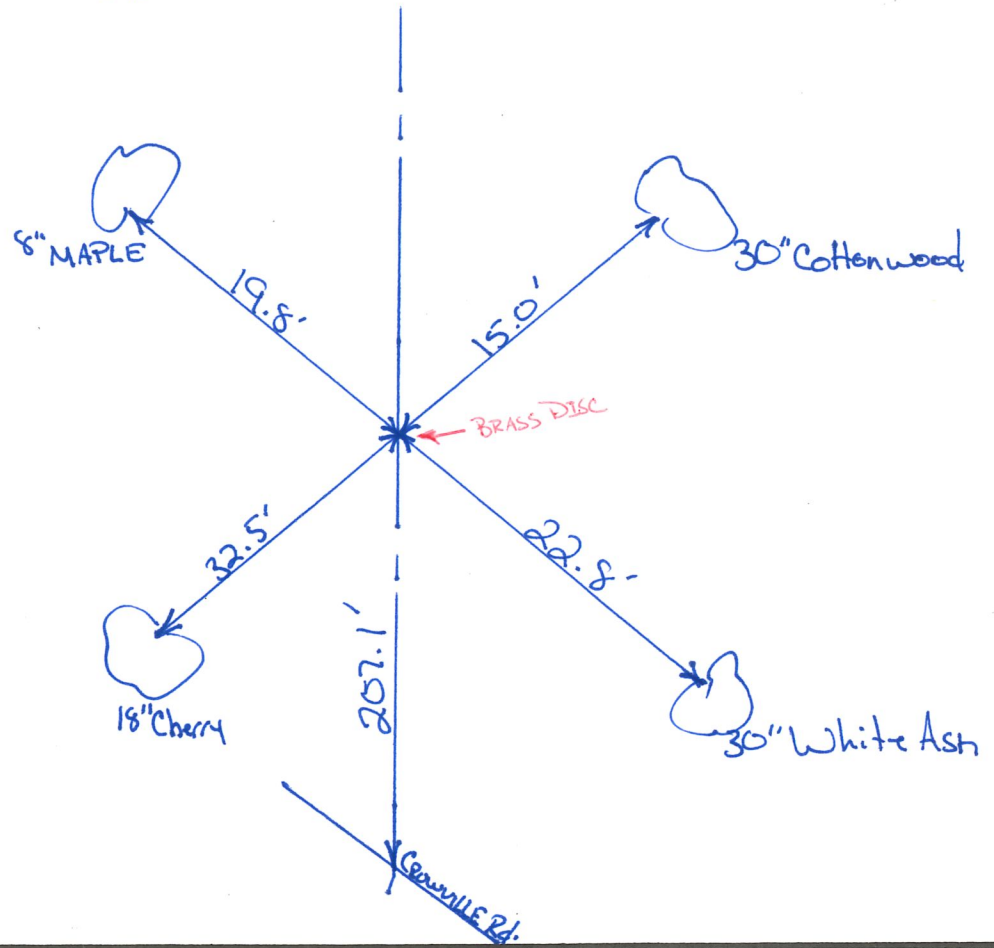
WARRICK COUNTY SURVEYOR  
KARAN HARGRAVE-BARNHILL

INDICATE CORNER REFERENCED



DESCRIBE CORNER REFERENCED

HIDDEN TRAIL COURT SUB.



STATE PLANE COORDINATE DATA

INDIANA ZONE: WEST

X \_\_\_\_\_

Y \_\_\_\_\_

ESTABLISHED BY:

\_\_\_\_\_

APPROVED BY

DATE

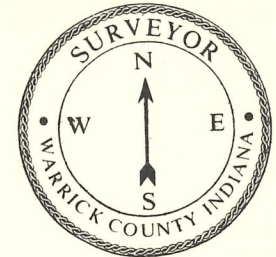
REFERENCED BY:

DATE

ALVIN S. PAUL

9-27-84

CORNER RECORD  
WARRICK COUNTY



DESCRIPTION:

SE CORNER SW<sup>1</sup>/<sub>4</sub>

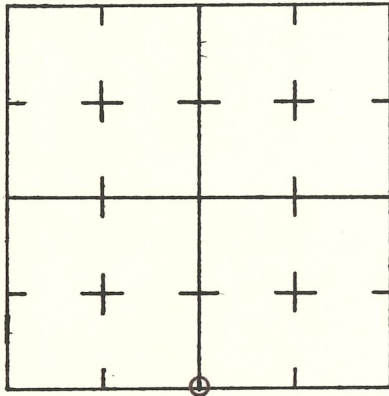
SECTION 13, T. 5 S. R. 8 W.

2<sup>nd</sup> PRINCIPLE MERIDIAN

WARRICK COUNTY SURVEYOR

MICHAEL IRVIN

INDICATE CORNER REFERENCED

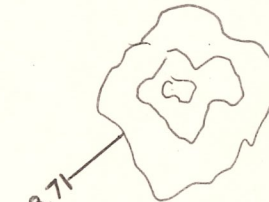
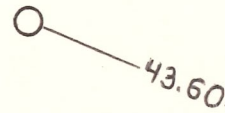


DESCRIBE CORNER REFERENCED

P.K. NAIL IN N.E.  
SIDE P.P. # 84-143

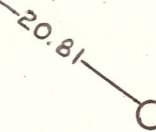
(N 300) SQUARE DEAL MINE RD

CROWVILLE RD (W 50)



NAIL & BOTTLE CAP  
S.W. SIDE OF TREE

3/4" IRON PIN



NAIL N.E. SIDE  
P.P. # 84-142

STATE PLANE COORDINATE DATA

INDIANA ZONE: WEST

X \_\_\_\_\_

Y \_\_\_\_\_

ESTABLISHED BY:

\_\_\_\_\_

APPROVED BY

E. DOCKERY R.L.S. 9920

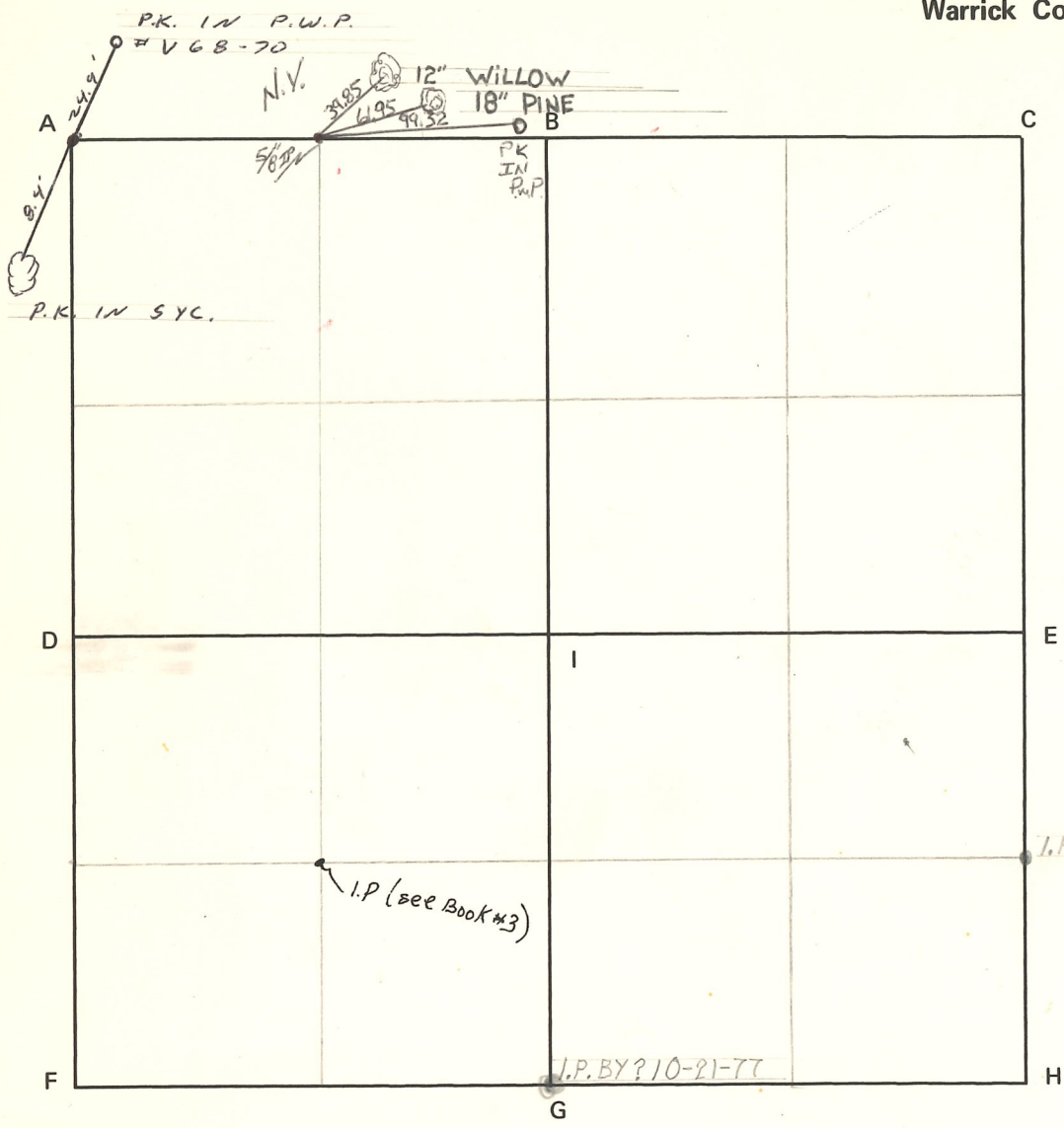
DATE

REFERENCED BY:

E. DOCKERY

DATE

CORNER CODE SYSTEM  
Warrick County



NOTES

CORNER RECORD  
WARRICK COUNTY

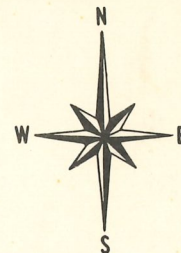
DESCRIPTION:

SE CORNER SE 1/4 SE 1/4

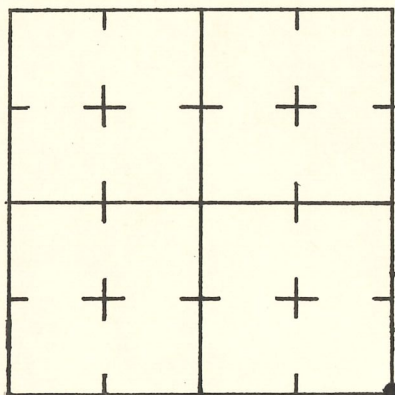
SECTION 14, T. 5 S. R. 8 W.

2<sup>nd</sup> PRINCIPAL MERIDIAN

WARRICK COUNTY SURVEYOR  
MICHAEL F. FELDBUSCH, L.S.

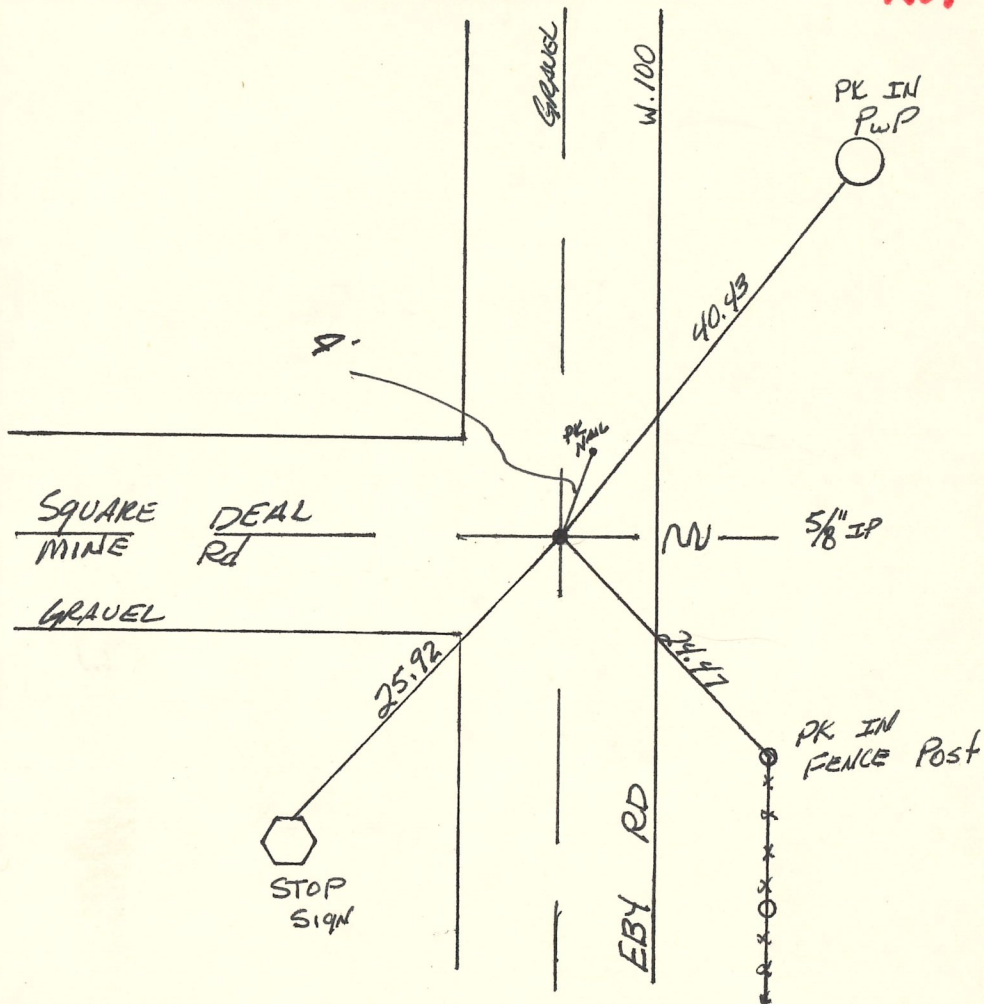


INDICATE CORNER REFERENCED



DESCRIBE CORNER REFERENCED

**NOT VERIFIED**



STATE PLANE COORDINATE DATA

INDIANA ZONE: WEST

X \_\_\_\_\_

Y \_\_\_\_\_

ESTABLISHED BY:

APPROVED BY

DATE

REFERENCED BY:

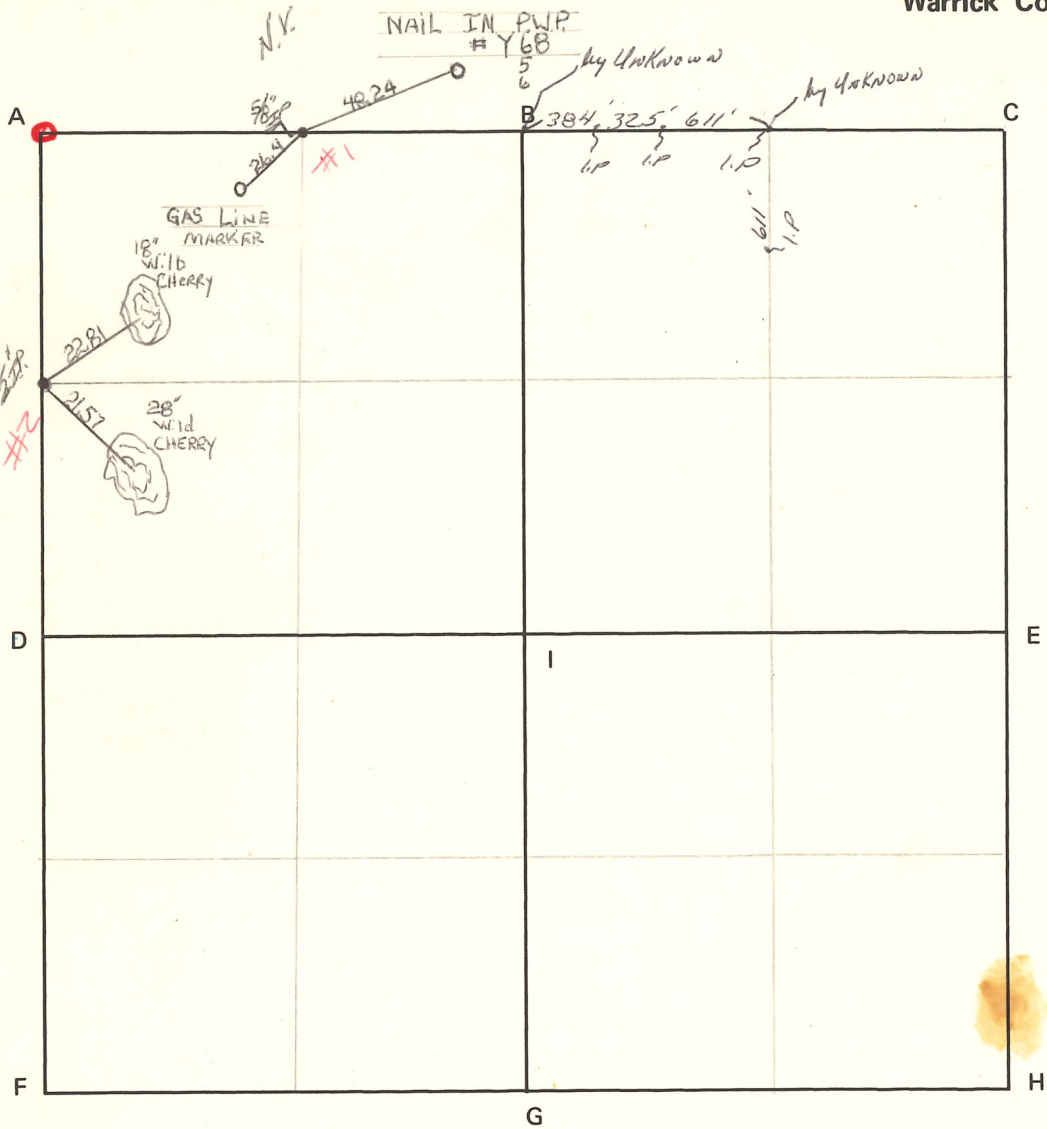
DATE

*Gary Beck*

4-4-84

CORNER CODE SYSTEM  
Warrick County

NOTES



# RECORD OF SECTION CORNERS

## Warrick County

Section 15 Township 5 South Range 8 West 2nd Principle Meridian

Date	Cor	Location	Description of		Distance from Corner	Bearing from Corner (North Assumed)	Cond	Check By	Remarks
			Monument	Reference					
5-8-73 & 10-9-75	A	NW cor.	1" iron rod. (1½ft. deep) (raised 5/8" re-bar 1975)	1) Post 2) PK nail 3) PK nail	31.0' 46.2' 35.3'	N 33° E S 68° E N 35° W	good	GAT	Found in place Post of road sign In tele. pole #11 In PWP # Y6851



**CORNER CODE SYSTEM**

PK RWI P Warrick County  
#Y6851

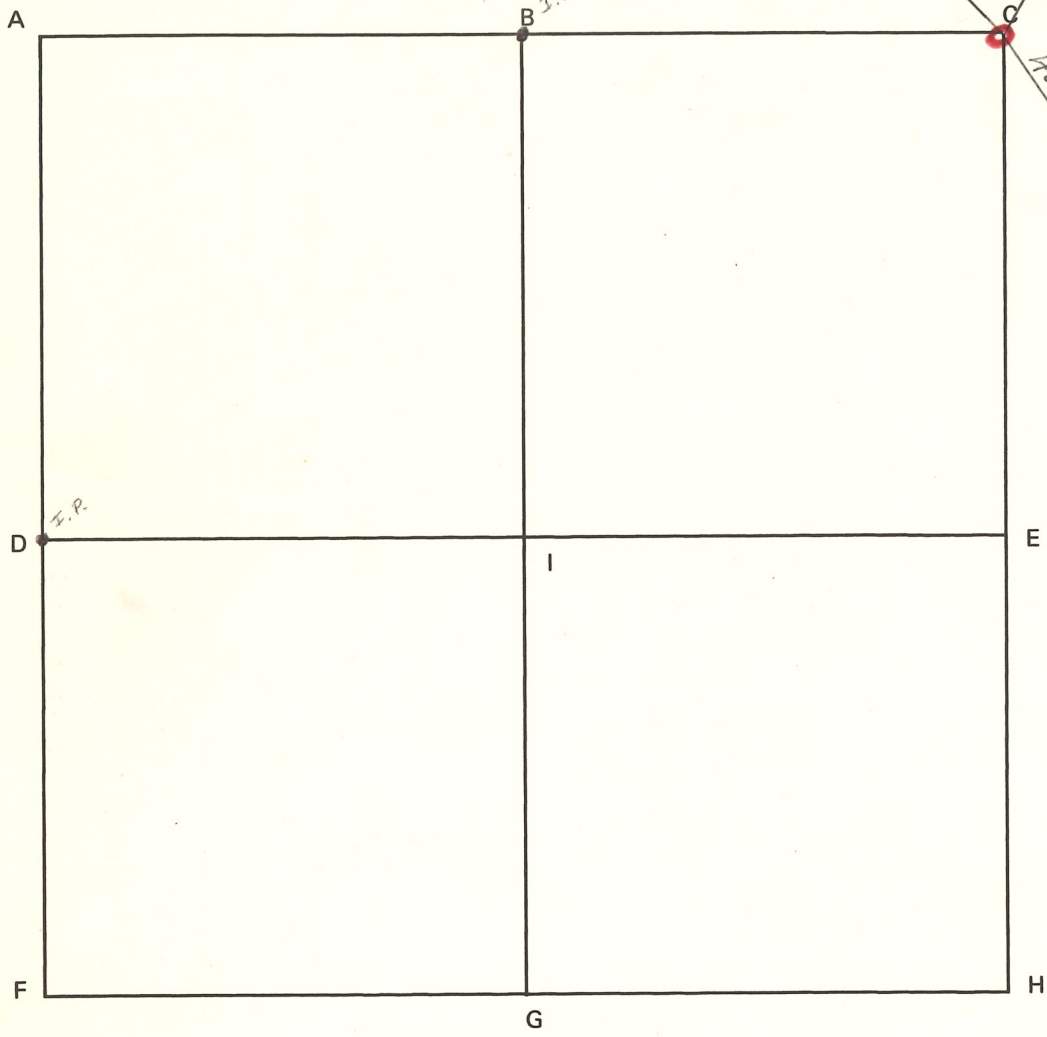
Post Road sign

35.3

31'

46.2

PK T.P #11



NOTES

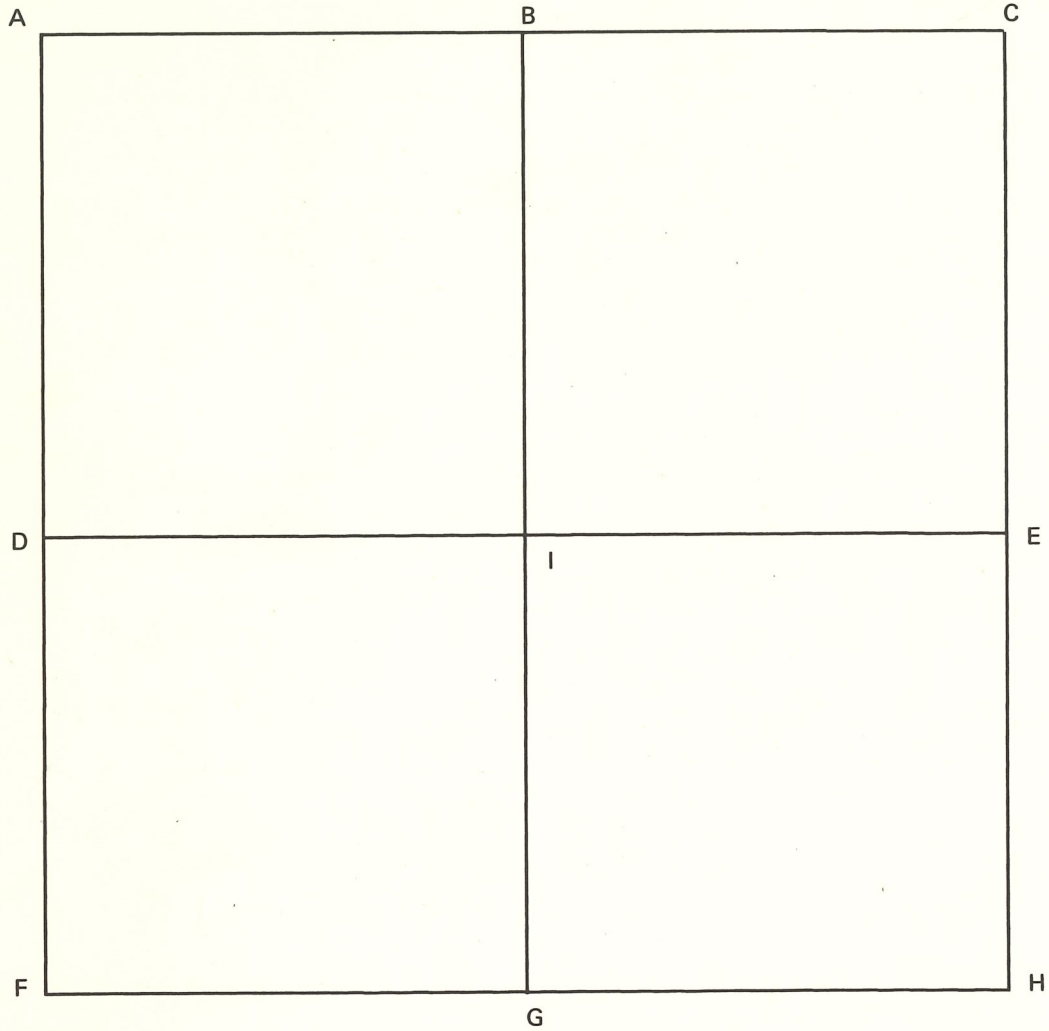
RECORD OF SECTION CORNERS

Warrick County

Section 16 Township 5 South Range 8 West 2nd Principle Meridian

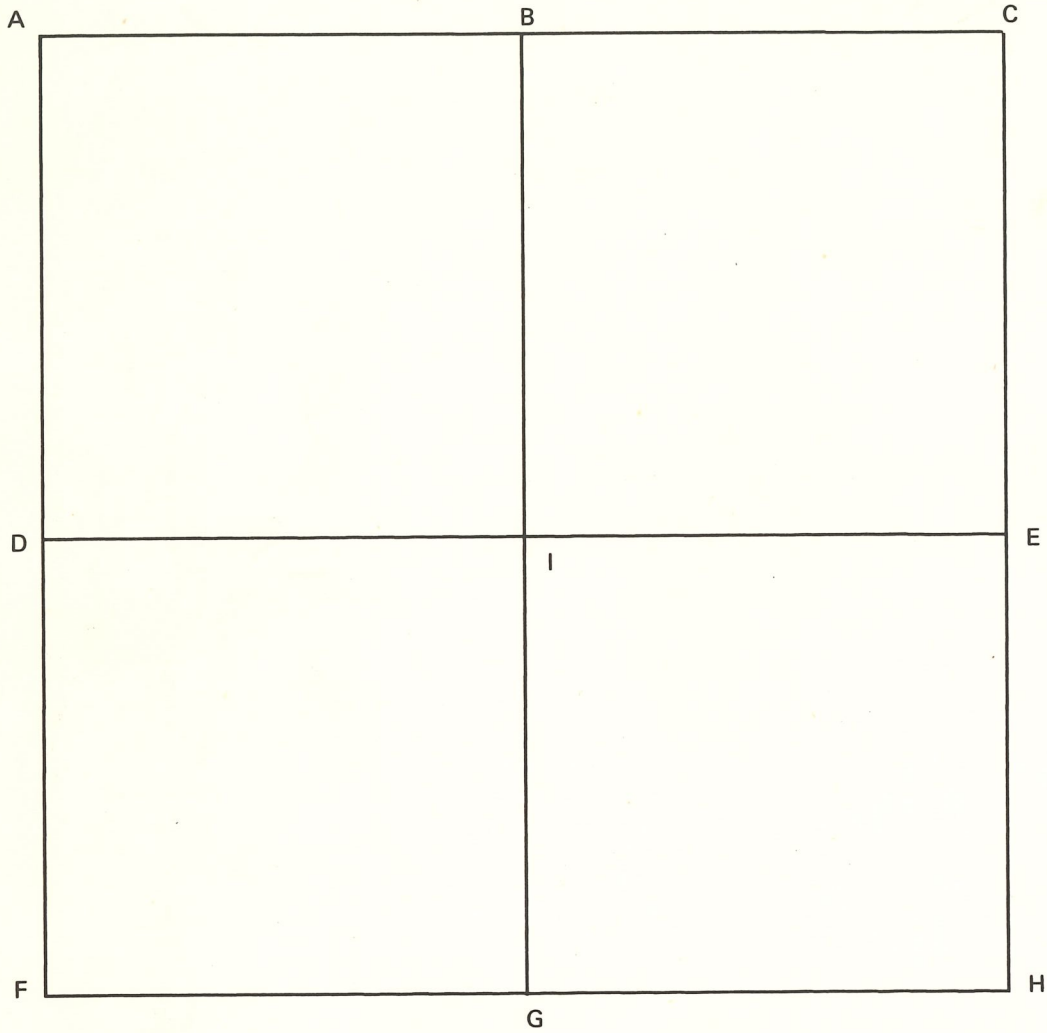
Date	Cor	Location	Description of		Distance from Corner	Bearing from Corner (North Assumed)	Cond	Check By	Remarks
			Monument	Reference					
10/2/73	B		iron pin	pk in fence corner	32.75				SWC IN N.400& <del>5250</del> road
5-8-73 & 10-9-75	C	NE cor.	1" iron rod. (1½ft. deep) (raised 5/8" re-bar 1975)	1) Post 2) PK nail 3) PK nail	31.0' 46.2' 35.3'	N 33° E S 68° E N 35° W	good	GAT	Found in place Post of road sign In tele. Pole #11 In PWP # Y6851
10/1/73	D		iron pin	fence cor. post	16.6				SWC in E.200 road

**CORNER CODE SYSTEM**  
**Warrick County**



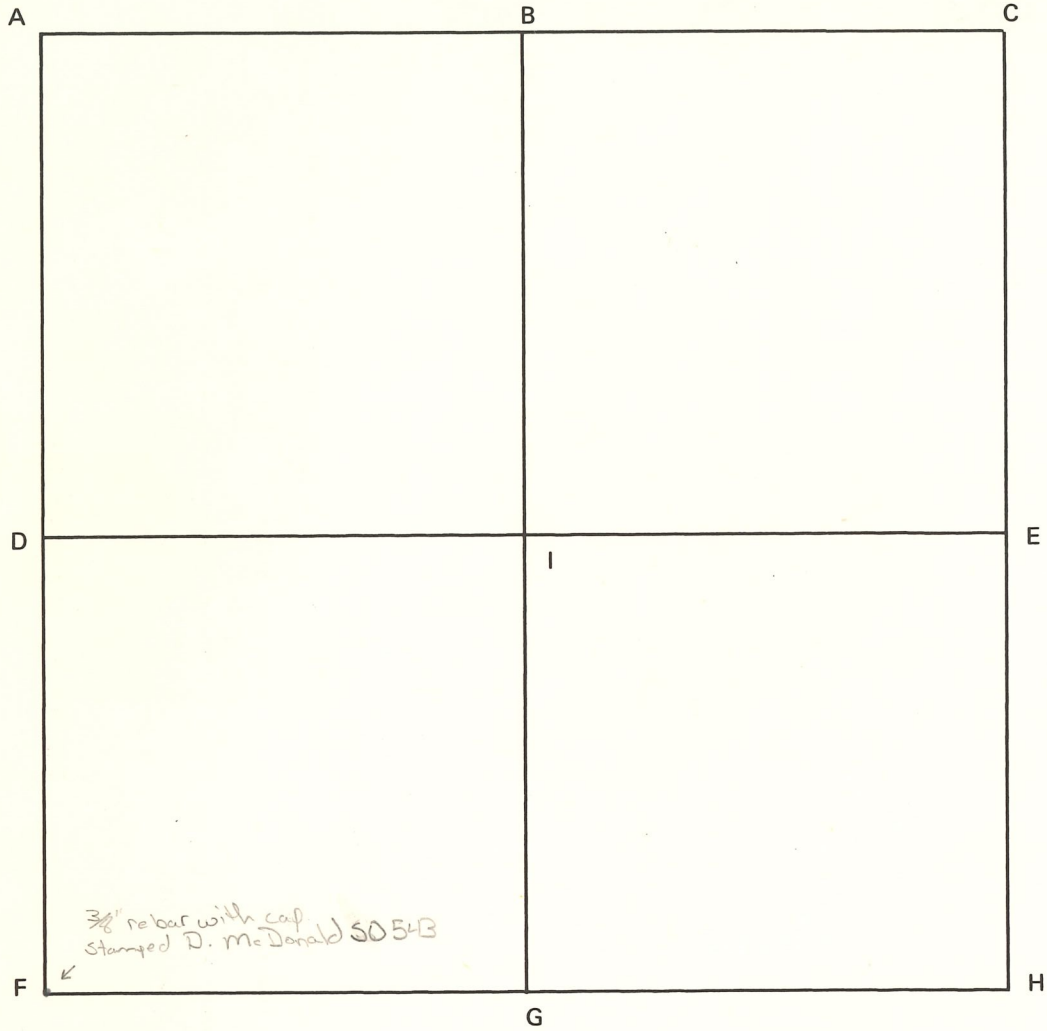
**NOTES**

**CORNER CODE SYSTEM**  
**Warrick County**



NOTES

**CORNER CODE SYSTEM**  
**Warrick County**



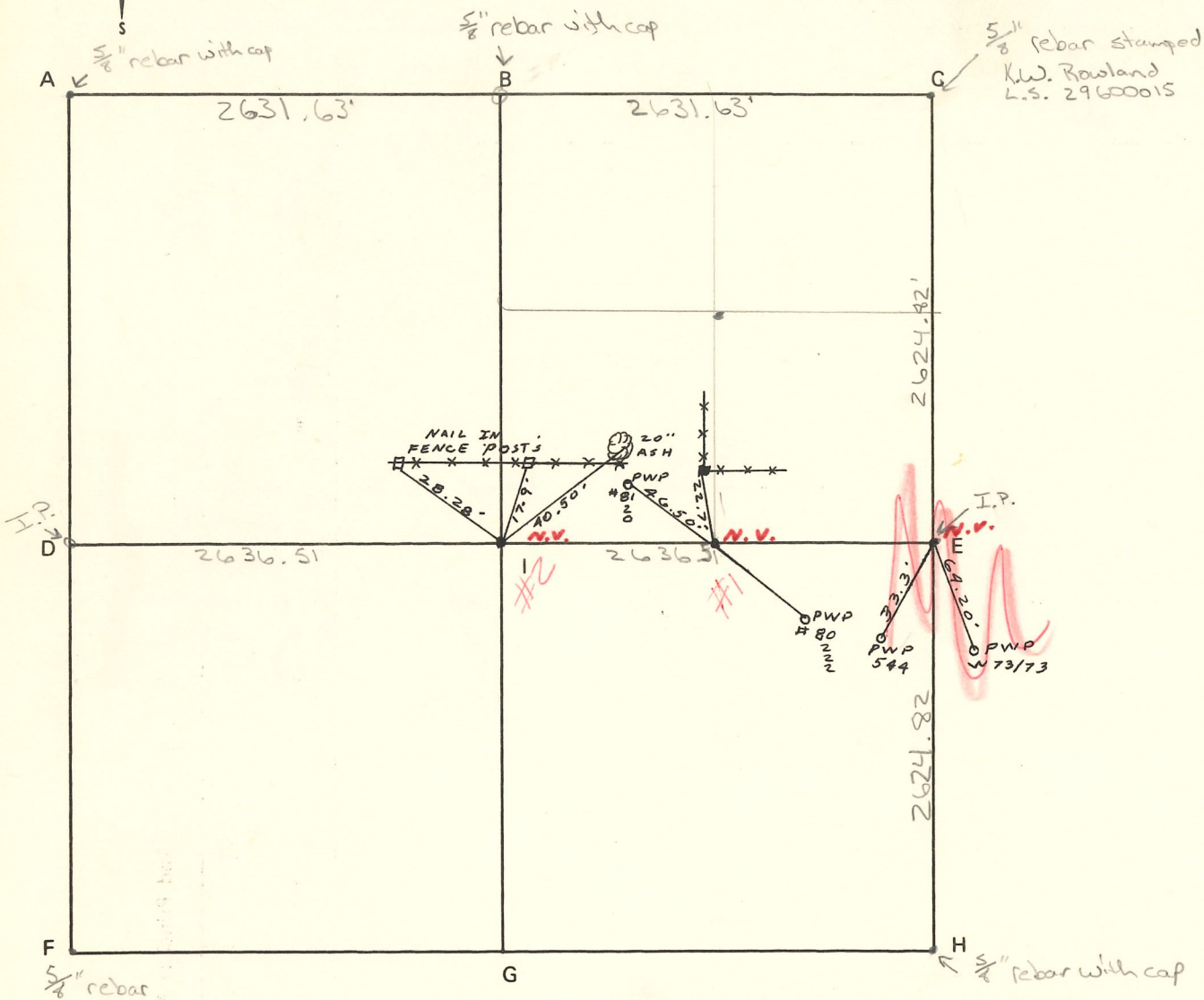
**NOTES**



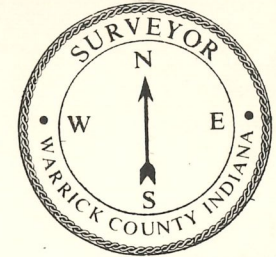
WARRICK COUNTY SURVEYOR  
MICHAEL F. FELDBUSCH

CORNER CODE SYSTEM  
Warrick County

NOTES



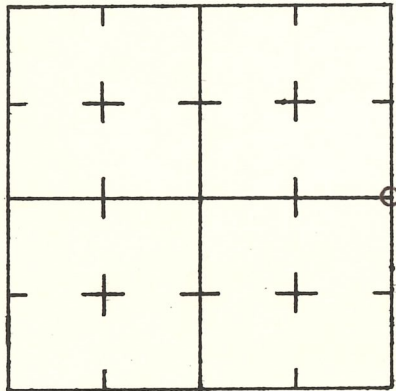
CORNER RECORD  
WARRICK COUNTY



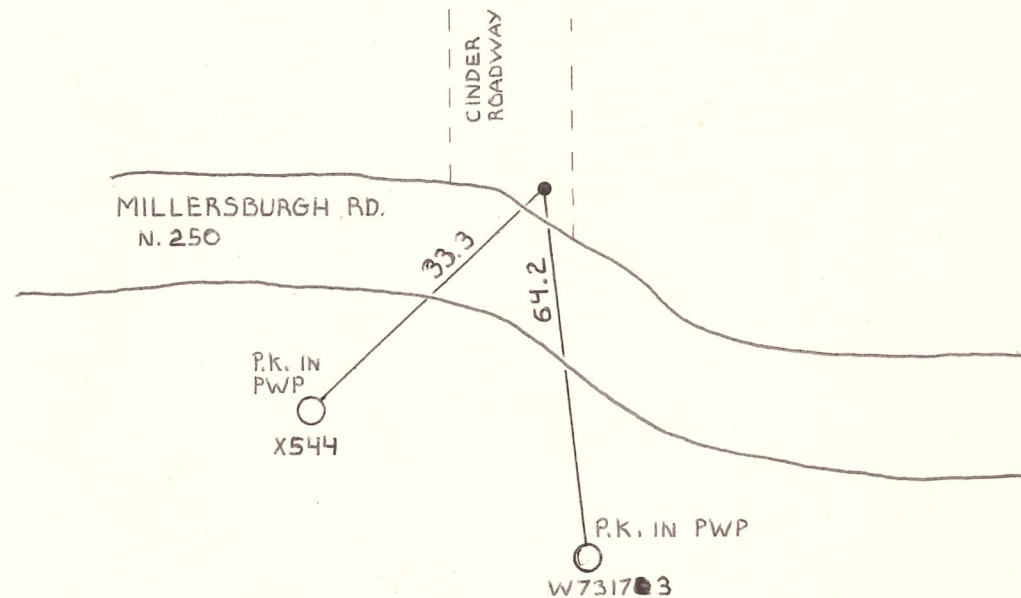
DESCRIPTION:  
NE SE CORNER NE 1/4 SE 1/4  
 SECTION 20, T. 5 S. R. 8 W.  
2<sup>nd</sup> PRINCIPLE MERIDIAN

WARRICK COUNTY SURVEYOR  
MICHAEL IRVIN

INDICATE CORNER REFERENCED



DESCRIBE CORNER REFERENCED



STATE PLANE COORDINATE DATA

INDIANA ZONE: WEST

X \_\_\_\_\_

Y \_\_\_\_\_

ESTABLISHED BY:  
\_\_\_\_\_

APPROVED BY NOT VERIFIED

DATE  
6-18-73

REFERENCED BY:

DATE

000025

~~SE cor NE  $\frac{1}{4}$  sec 20-T65-R8W~~  
~~SW cor NW  $\frac{1}{4}$  sec 21-T55-R8W~~

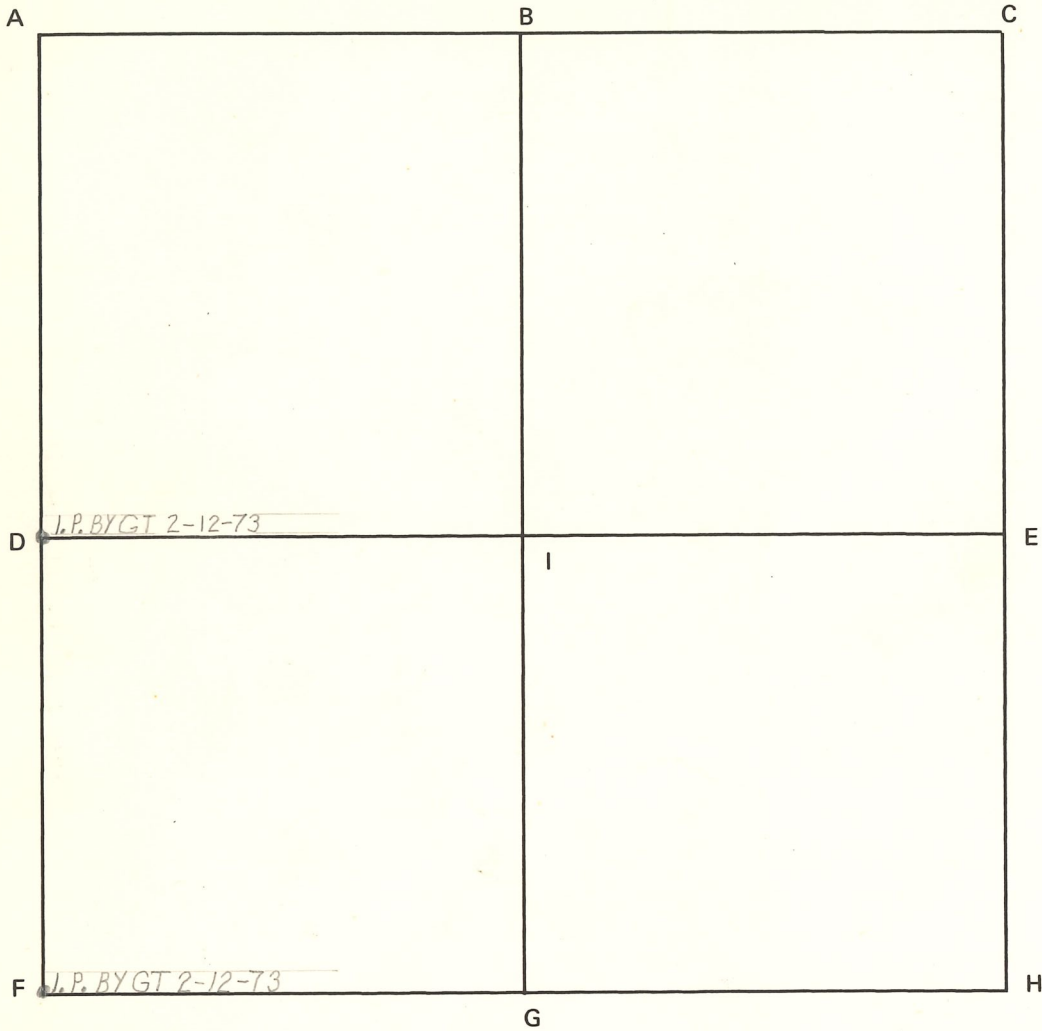
Type of Monument: I.P. (existing)

Date referenced: 6/18/73

referenced by: SWC

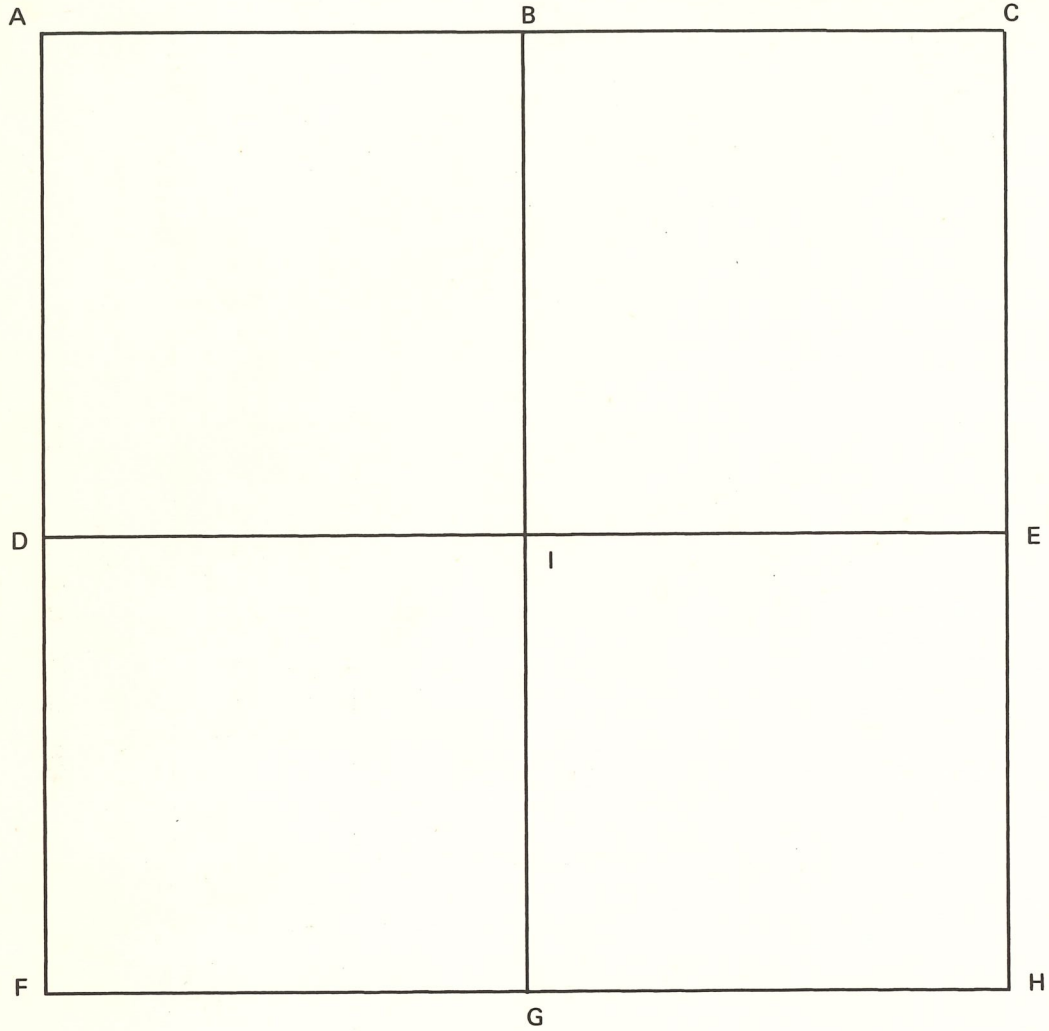


**CORNER CODE SYSTEM**  
**Warrick County**



NOTES

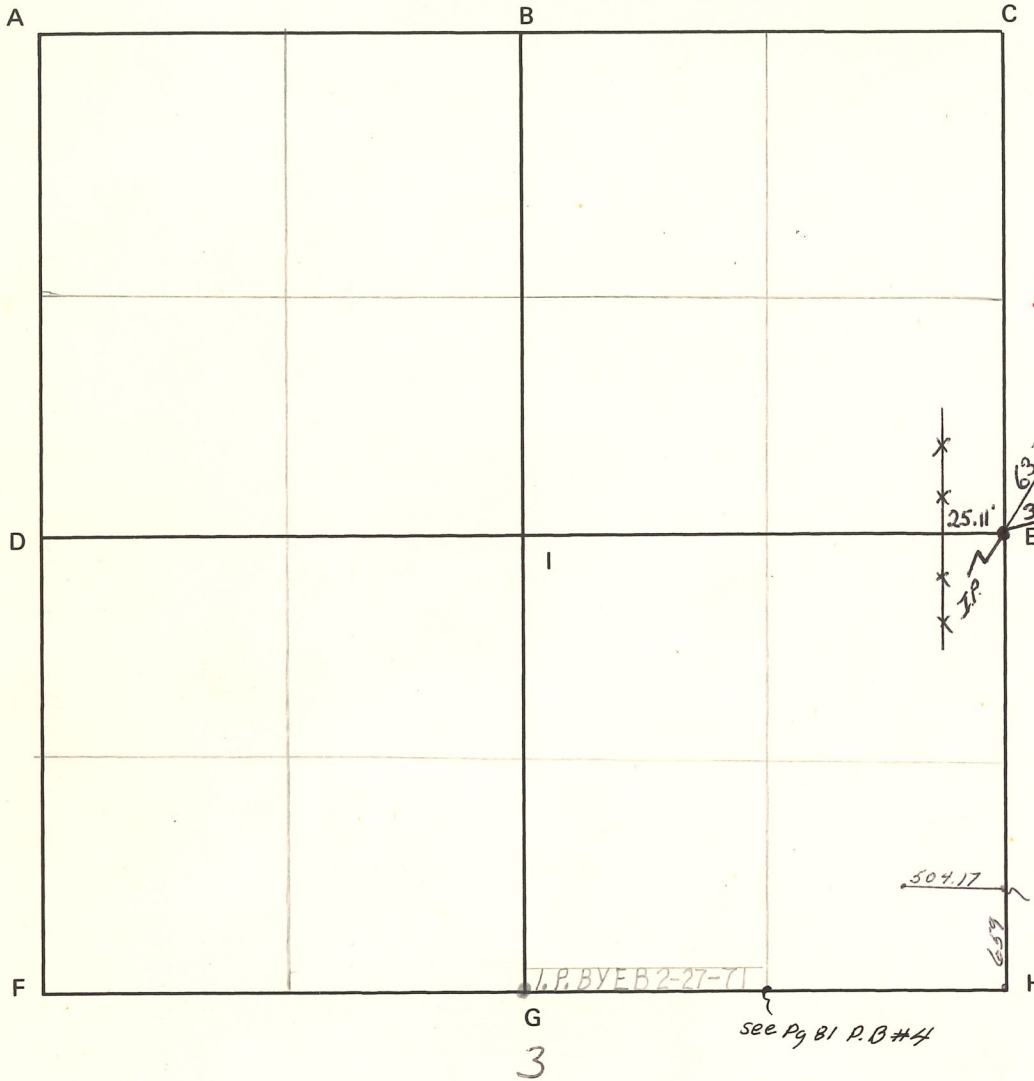
**CORNER CODE SYSTEM**  
**Warrick County**



NOTES

CORNER CODE SYSTEM  
Warrick County

NOTES



J.P. BYEB 2-27-71

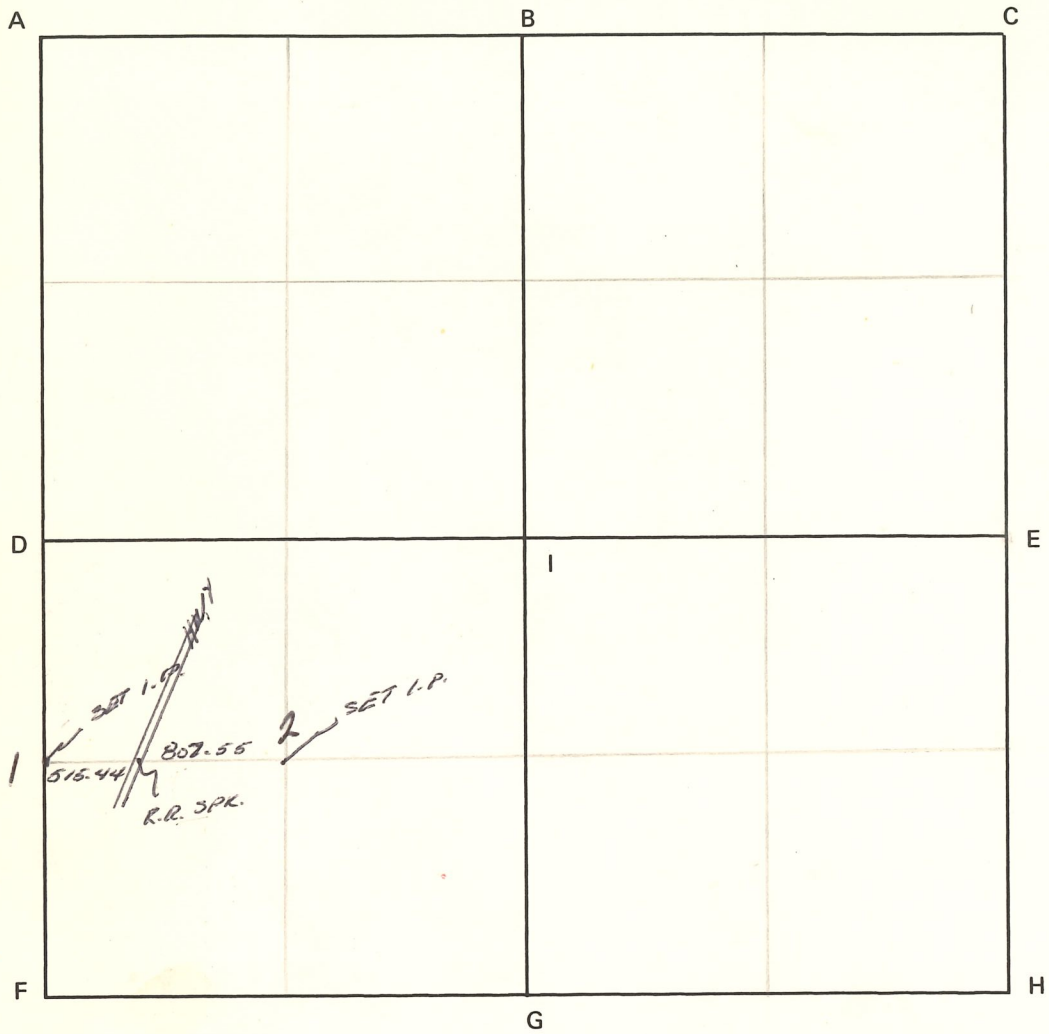
see Pg 81 P.O.#4

3

504.17  
6.59  
by Unknown 2

**CORNER CODE SYSTEM**  
**Warrick County**

NOTES





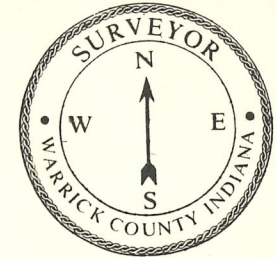
RECORD OF SECTION CORNERS

Warrick County

on 25 Township 5 South Range 8 West 2nd Principle Meridian

Date	Cor	Location	Description of		Distance from Corner	Bearing from Corner (North Assumed)	Cond	Check By	Remarks
			Monument	Reference					
6/20/73			R.R. Spike	pk in 24" oak	49.3				
				pk in TP 1/2	20/15				Ne cor. Nw 1/4 SW1/4 in N 150 rd. (w75 rd)
6/20/73			R.R. spike	pk in PWP 1328	23.3				SWC
			PK	pk in TP 1/2	20 15				
6/20/73			R.R. spike	pk in PWP 1328	23.3				SWC

**CORNER RECORD  
WARRICK COUNTY**



DESCRIPTION:

SE CORNER SW<sup>1</sup>/<sub>4</sub> SW<sup>1</sup>/<sub>4</sub>

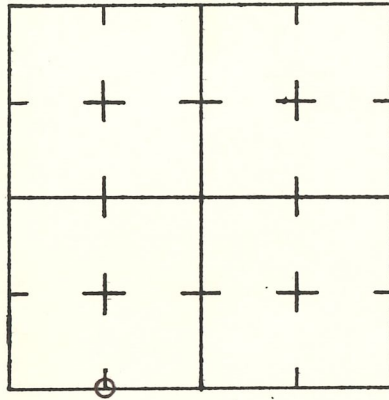
SECTION 25, T. 5 S. R. 8 W.

2<sup>nd</sup> PRINCIPLE MERIDIAN

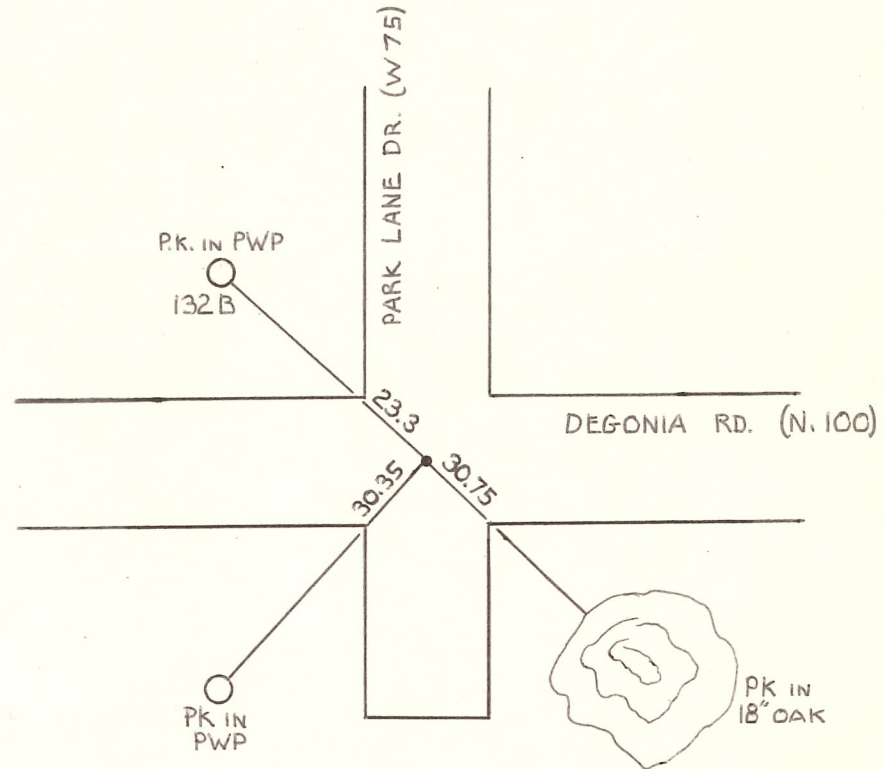
**WARRICK COUNTY SURVEYOR**

**MICHAEL IRVIN**

INDICATE CORNER REFERENCED



DESCRIBE CORNER REFERENCED



STATE PLANE COORDINATE DATA

INDIANA ZONE: WEST

X \_\_\_\_\_

Y \_\_\_\_\_

ESTABLISHED BY:

\_\_\_\_\_

APPROVED BY

NOT VERIFIED

DATE  
6-20-73

REFERENCED BY:

DATE

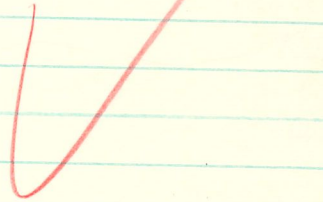
000035

SE corner SW  $\frac{1}{4}$  SW  $\frac{1}{4}$  s 25 T5s R8w

Type of Monument: Railroad spike (existing)

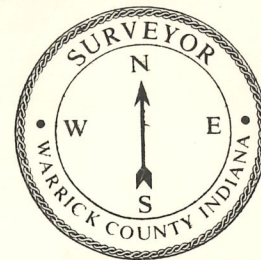
Date referenced: 6/20/73

referenced by: SWC





CORNER RECORD  
WARRICK COUNTY



DESCRIPTION:

NE CORNER NW 1/4 SW 1/4

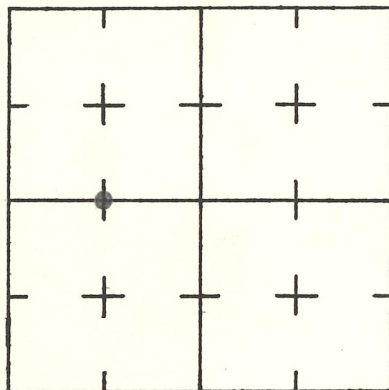
SECTION 25, T. 5 S. R. 8 W.

2<sup>nd</sup> PRINCIPLE MERIDIAN

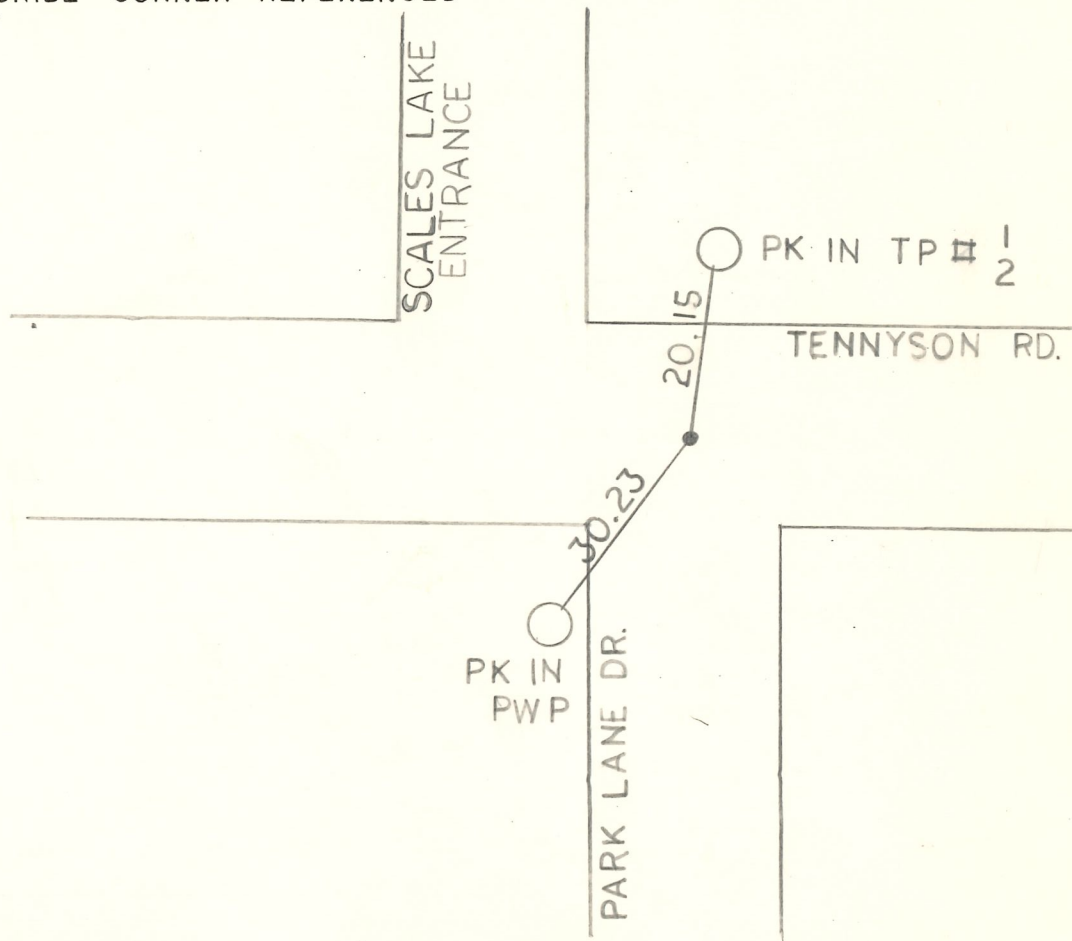
WARRICK COUNTY SURVEYOR

MICHAEL IRVIN

INDICATE CORNER REFERENCED



DESCRIBE CORNER REFERENCED



STATE PLANE COORDINATE DATA

INDIANA ZONE: WEST

X \_\_\_\_\_

Y \_\_\_\_\_

ESTABLISHED BY:

\_\_\_\_\_

APPROVED BY

DATE

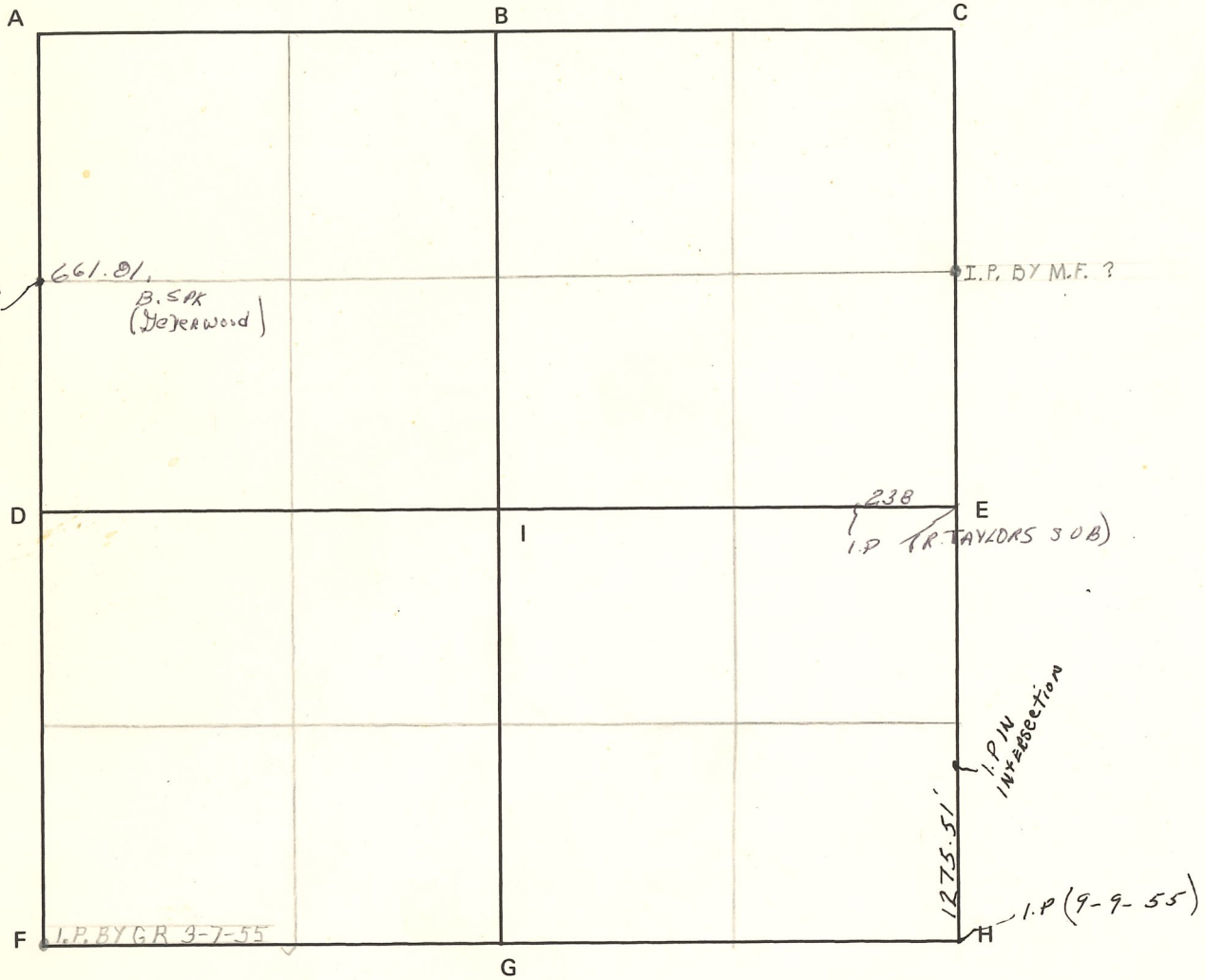
REFERENCED BY: G.B. & M.I.

DATE

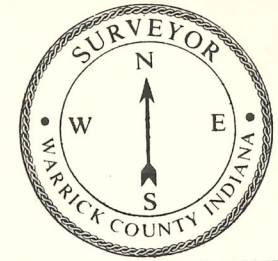
8/26/87

CORNER CODE SYSTEM  
Warrick County

NOTES



CORNER RECORD  
WARRICK COUNTY



DESCRIPTION:

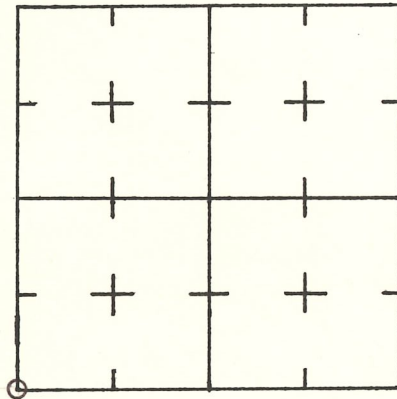
SW CORNER \_\_\_\_\_

SECTION 27, T. 5 S. R. 8 W.

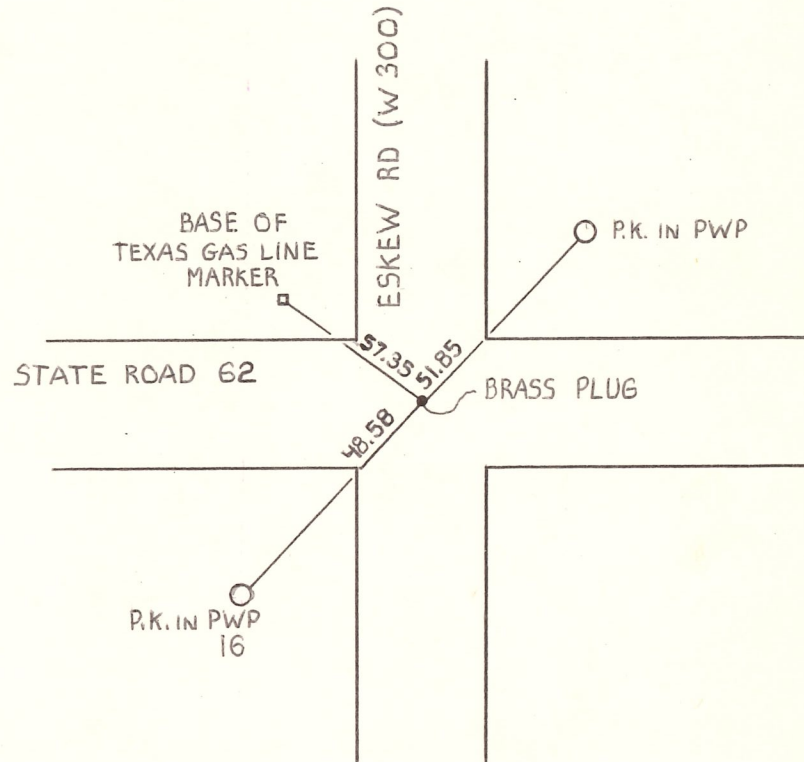
2<sup>nd</sup> PRINCIPLE MERIDIAN

WARRICK COUNTY SURVEYOR  
MICHAEL IRVIN

INDICATE CORNER REFERENCED



DESCRIBE CORNER REFERENCED



STATE PLANE COORDINATE DATA

INDIANA ZONE: WEST

X \_\_\_\_\_

Y \_\_\_\_\_

ESTABLISHED BY:  
\_\_\_\_\_

APPROVED BY

DATE  
7-18-73

REFERENCED BY:

DATE

00055

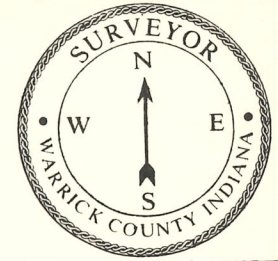
SE corner 528 T5s R8W +  
( SW cor 527 T5s R8W + )  
NE cor 533 T5s R8W +  
NW cor 534 T5s R8W

Type Monument: Brass Plug

Date referenced: 7-18-73

referenced by: SWC

CORNER RECORD  
WARRICK COUNTY



DESCRIPTION:

SE CORNER NW<sup>1</sup>/<sub>4</sub> NE<sup>1</sup>/<sub>4</sub>

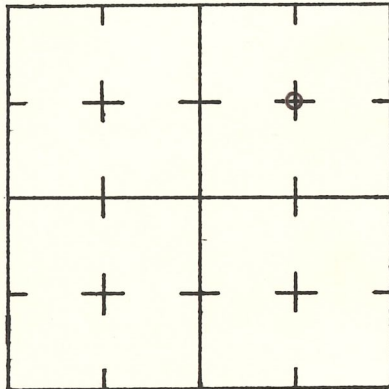
SECTION 27, T. 5 S. R. 8 W.

2<sup>nd</sup> PRINCIPLE MERIDIAN

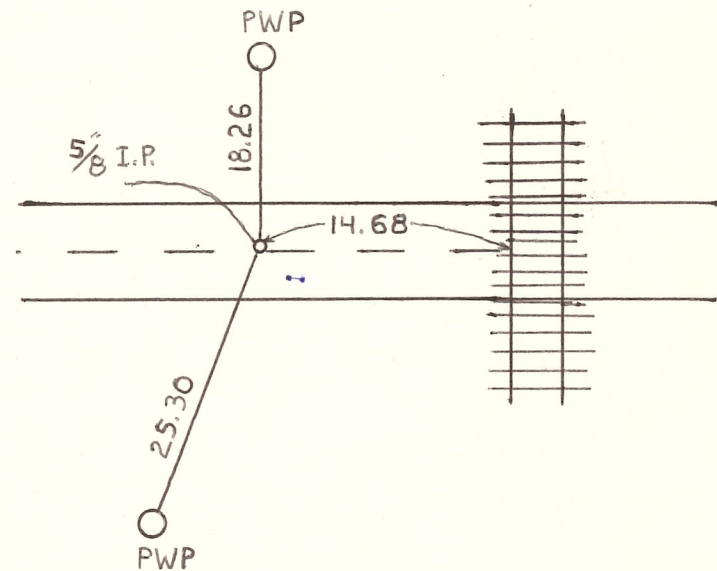
WARRICK COUNTY SURVEYOR

MICHAEL IRVIN

INDICATE CORNER REFERENCED



DESCRIBE CORNER REFERENCED



STATE PLANE COORDINATE DATA

INDIANA ZONE: WEST

X \_\_\_\_\_

Y \_\_\_\_\_

ESTABLISHED BY:  
\_\_\_\_\_

APPROVED BY

DATE

REFERENCED BY:

G.B.

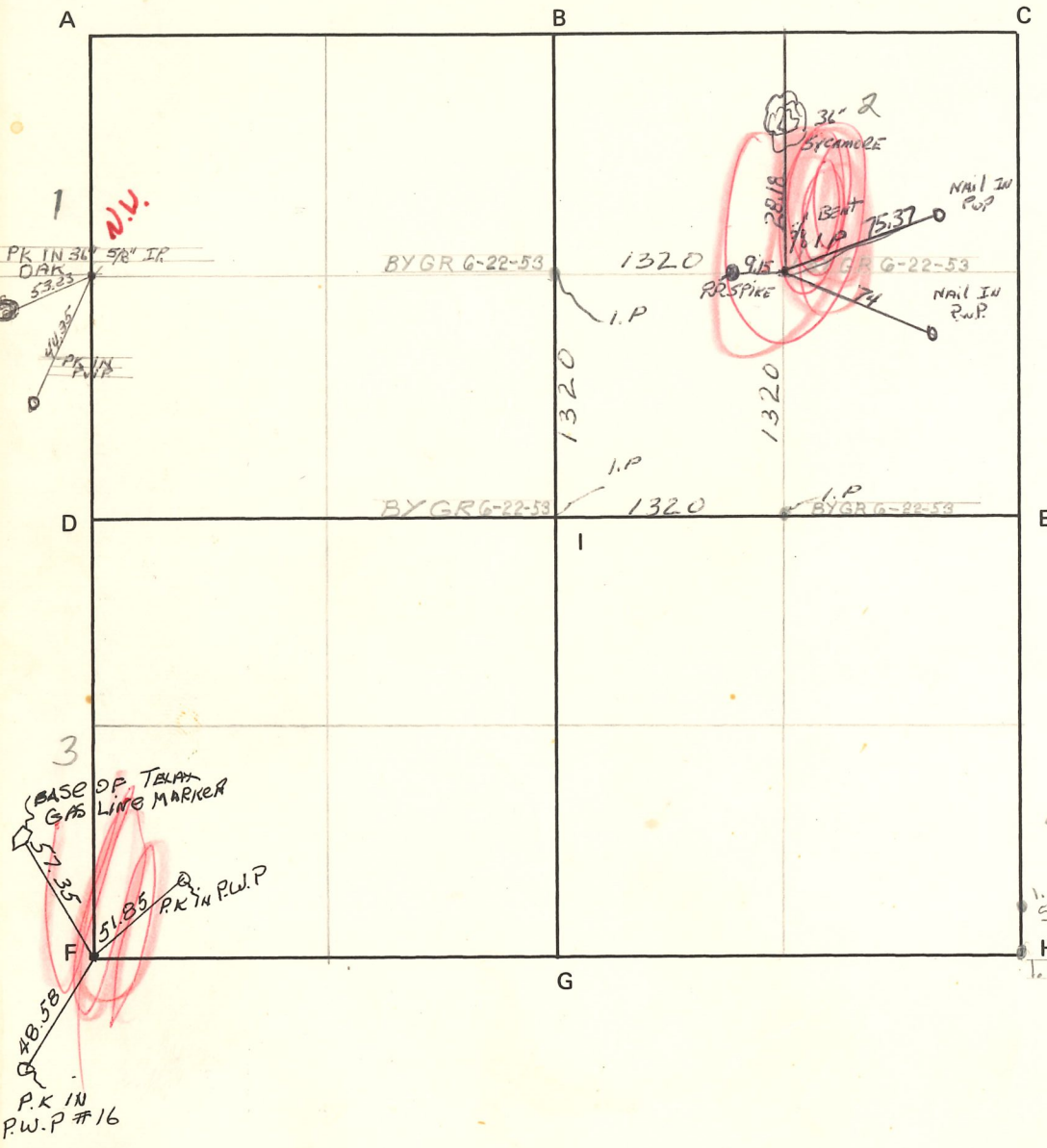
DATE

9-19-84

**CORNER CODE SYSTEM**  
Warrick County

NOTES

N.V.



4  
I.A. 165.8' N  
SEC COR 27-5-0  
BY GR 3-7-55  
I.P. BYGR 3-7-55

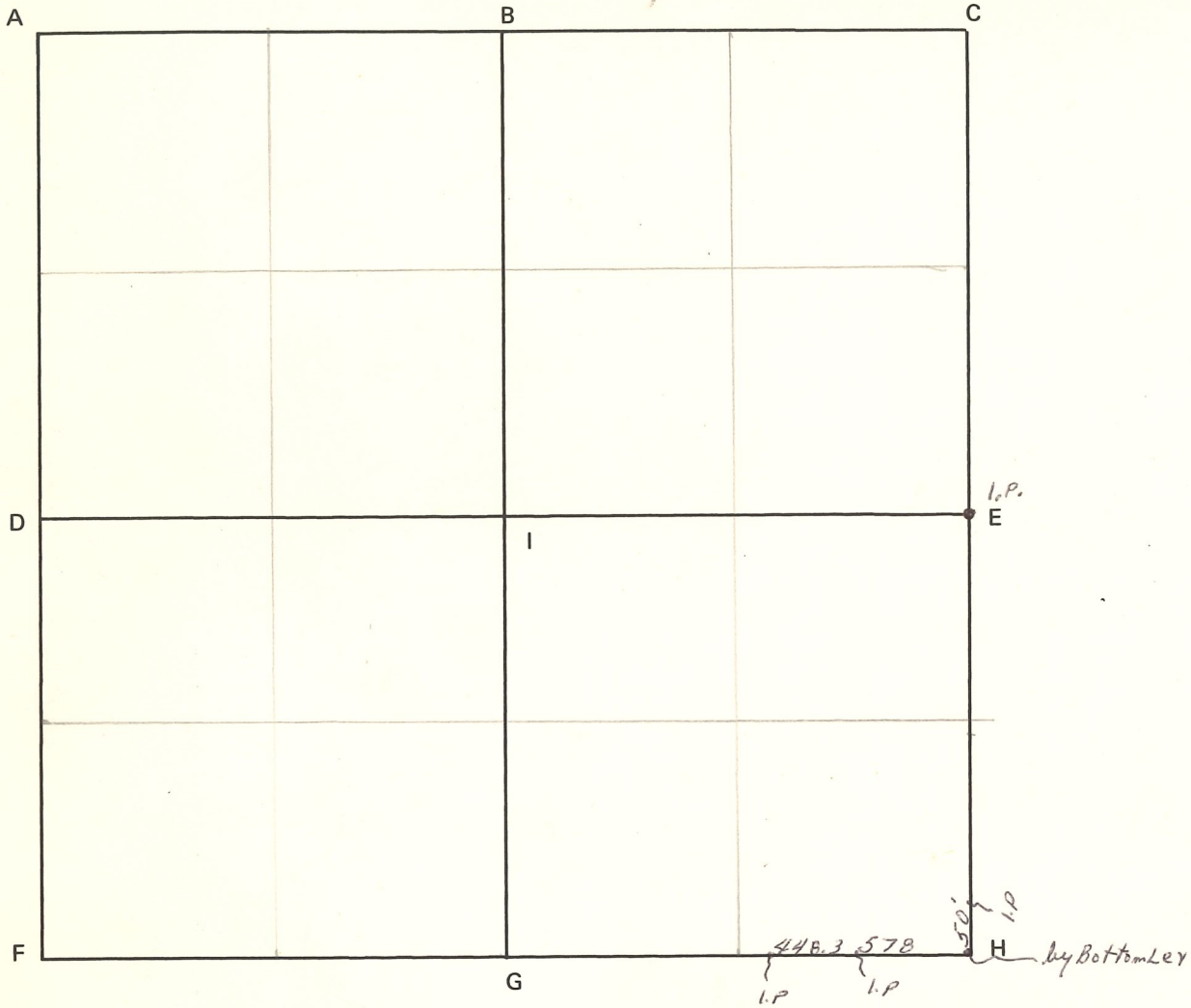
**RECORD OF SECTION CORNERS**  
**Warrick County**

tion 27 Township 5 South Range 8 West 2nd Principle Meridian \_\_\_\_\_

Date	Cor	Location	Description of		Distance from Corner	Bearing from Corner (North Assumed)	Cond	Check By	Remarks
			Monument	Reference					
6/27/53		SE cor. SW-NE	Iron pin						Reynolds swc

**CORNER CODE SYSTEM**  
**Warrick County**

NOTES





# RECORD OF SECTION CORNERS

## Warrick County

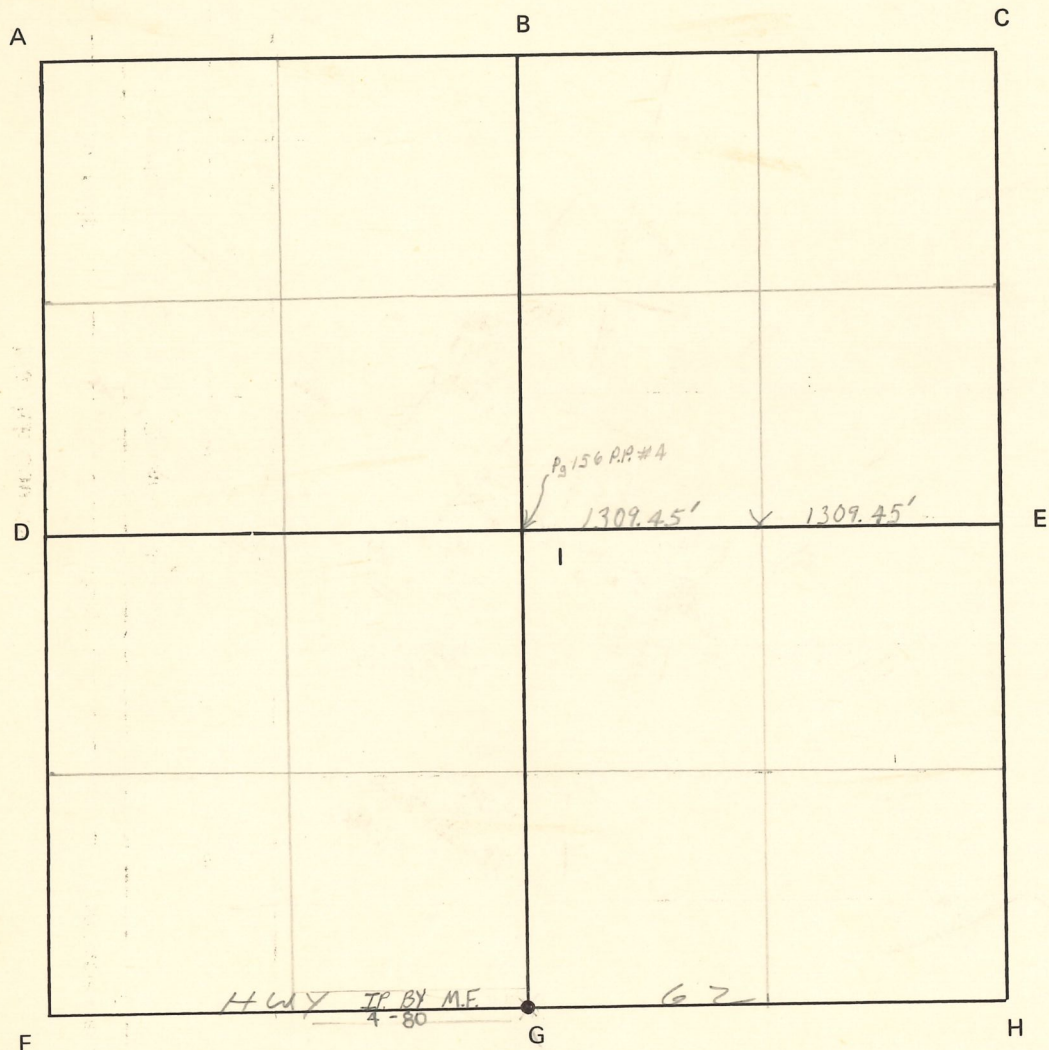
Section 28 Township 5 South Range 8 West 2nd Principle Meridian \_\_\_\_\_

Date	Cor	Location	Description of		Distance from Corner	Bearing from Corner (North Assumed)	Cond	Check By	Remarks
			Monument	Reference					
5/2/73	E.		iron pin	spring house	24.2				SWC
				POLE	38.05				IN 150 S.
				pole	62.2				in E. 300 rd &?

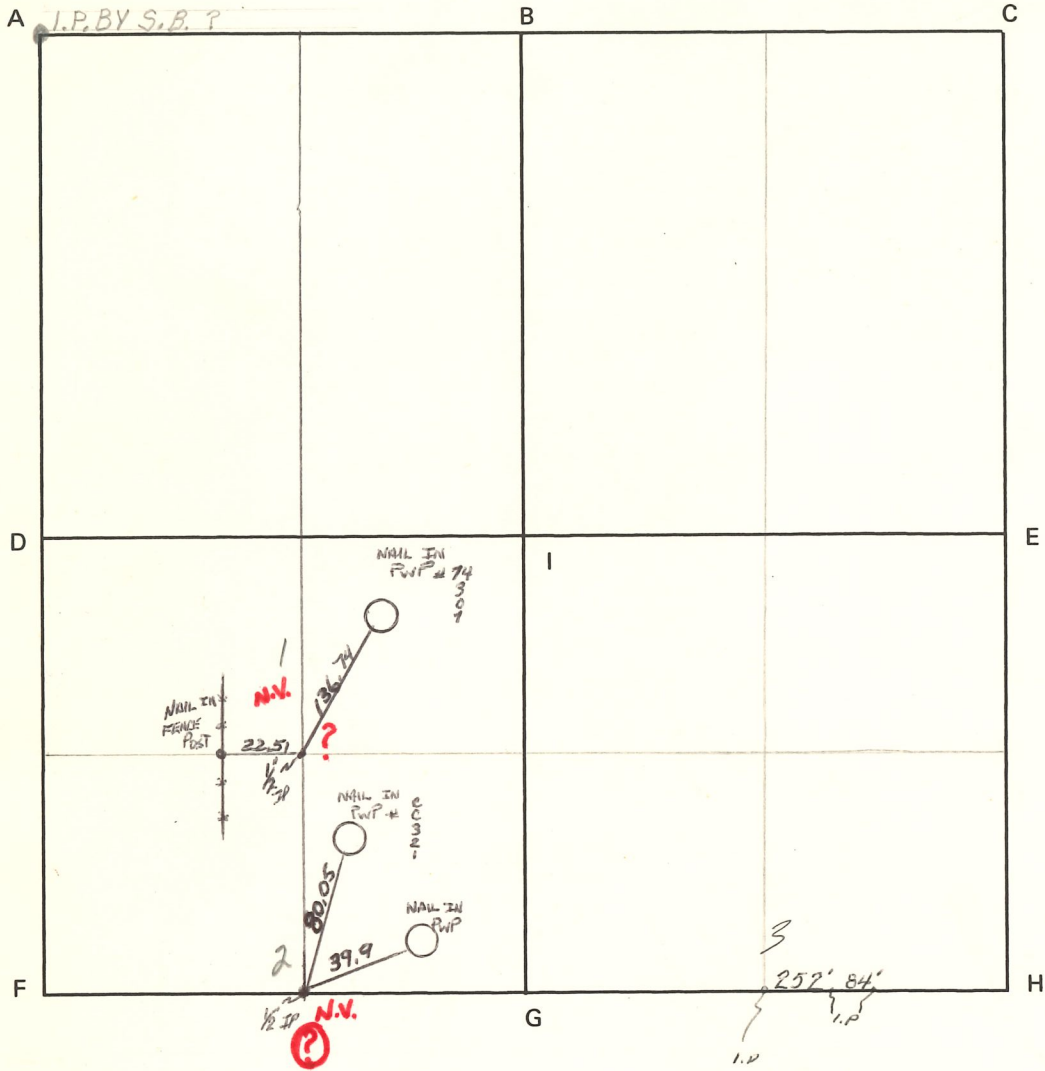
Section 29 Township 5 Range 8 2nd P.M.

**CORNER CODE SYSTEM**  
Warrick County

**NOTES**



CORNER CODE SYSTEM  
Warrick County



NOTES

**RECORD OF SECTION CORNERS**  
**Warrick County**

Section 30 Township 5 South Range 8 West 2nd Principle Meridian \_\_\_\_\_

Date	Cor	Location	Description of		Distance from Corner	Bearing from Corner (North Assumed)	Cond	Check By	Remarks
			Monument	Reference					
5/15/52	Sw cor.	SE-SE	Iron Pin						George Reynolds

CORNER RECORD  
WARRICK COUNTY

DESCRIPTION:

SW CORNER SW<sup>1</sup>/<sub>4</sub> SE<sup>1</sup>/<sub>4</sub>

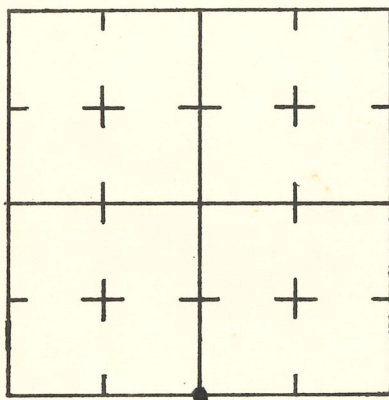
SECTION 30, T. 5 S. R. 8 W.

2<sup>nd</sup> PRINCIPAL MERIDIAN

WARRICK COUNTY SURVEYOR  
MICHAEL F. FELDBUSCH, L.S.

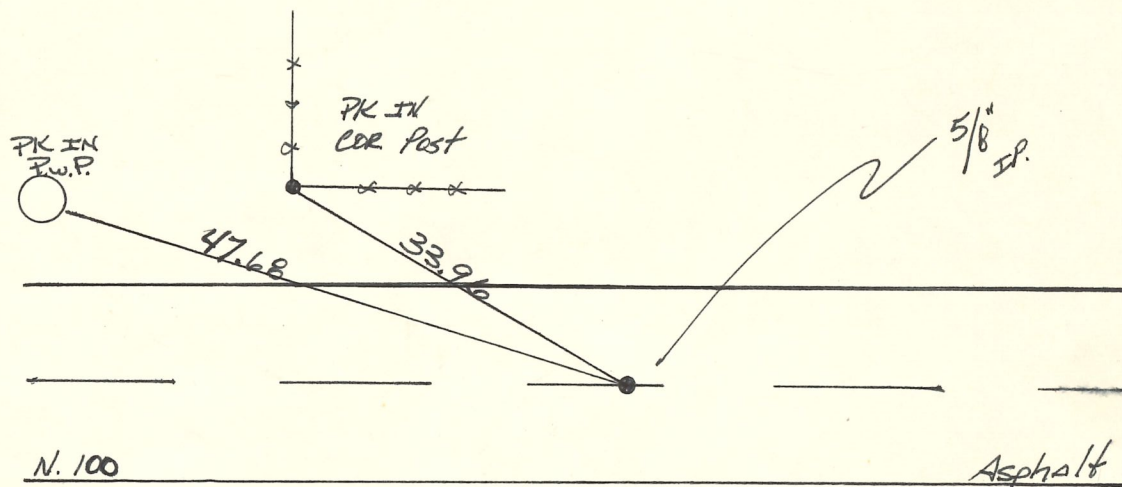


INDICATE CORNER REFERENCED



DESCRIBE CORNER REFERENCED

~~NOT VERIFIED~~  
**NOT VERIFIED**



STATE PLANE COORDINATE DATA

INDIANA ZONE: WEST

X \_\_\_\_\_

Y \_\_\_\_\_

ESTABLISHED BY:

\_\_\_\_\_

APPROVED BY

DATE

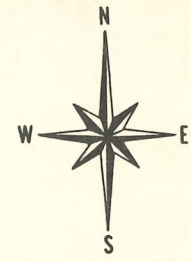
REFERENCED BY

DATE

*Lang Beck*

4-27-84

CORNER RECORD  
WARRICK COUNTY



DESCRIPTION :

SW CORNER SE 1/4 SE 1/4

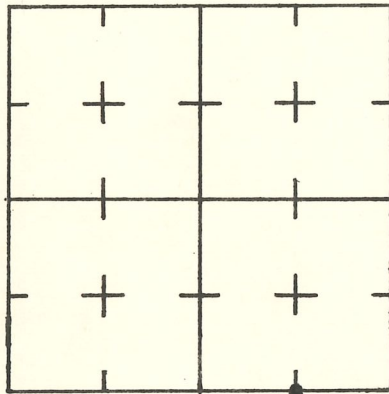
SECTION 30, T. 5 S.

R. 8 W.

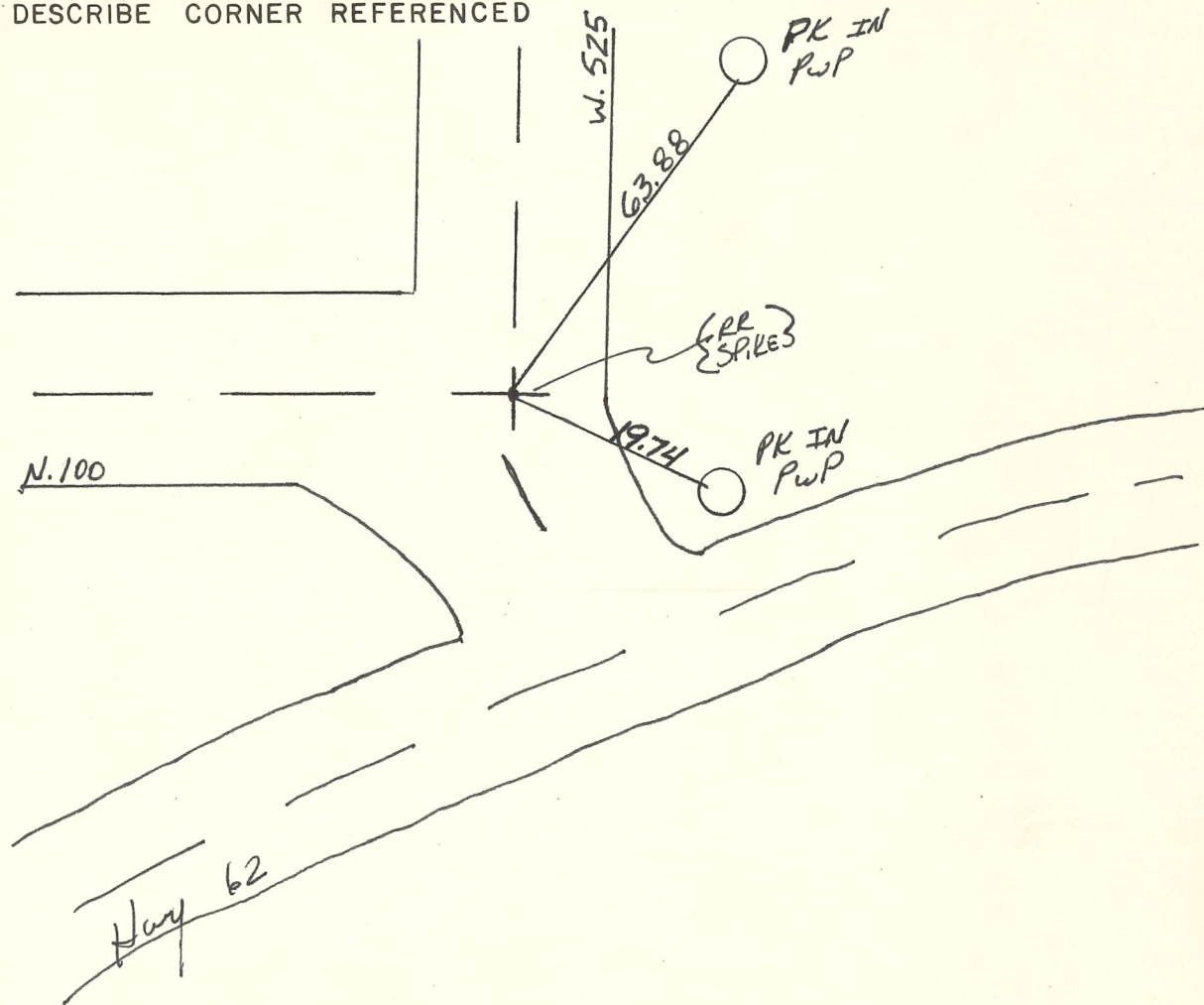
2<sup>nd</sup> PRINCIPAL MERIDIAN

WARRICK COUNTY SURVEYOR  
MICHAEL F. FELDBUSCH, L.S.

INDICATE CORNER REFERENCED



DESCRIBE CORNER REFERENCED



STATE PLANE COORDINATE DATA

INDIANA ZONE: WEST

X \_\_\_\_\_

Y \_\_\_\_\_

ESTABLISHED BY:

\_\_\_\_\_

APPROVED BY

*Mike Feldbusch* L.S. # 50459

DATE

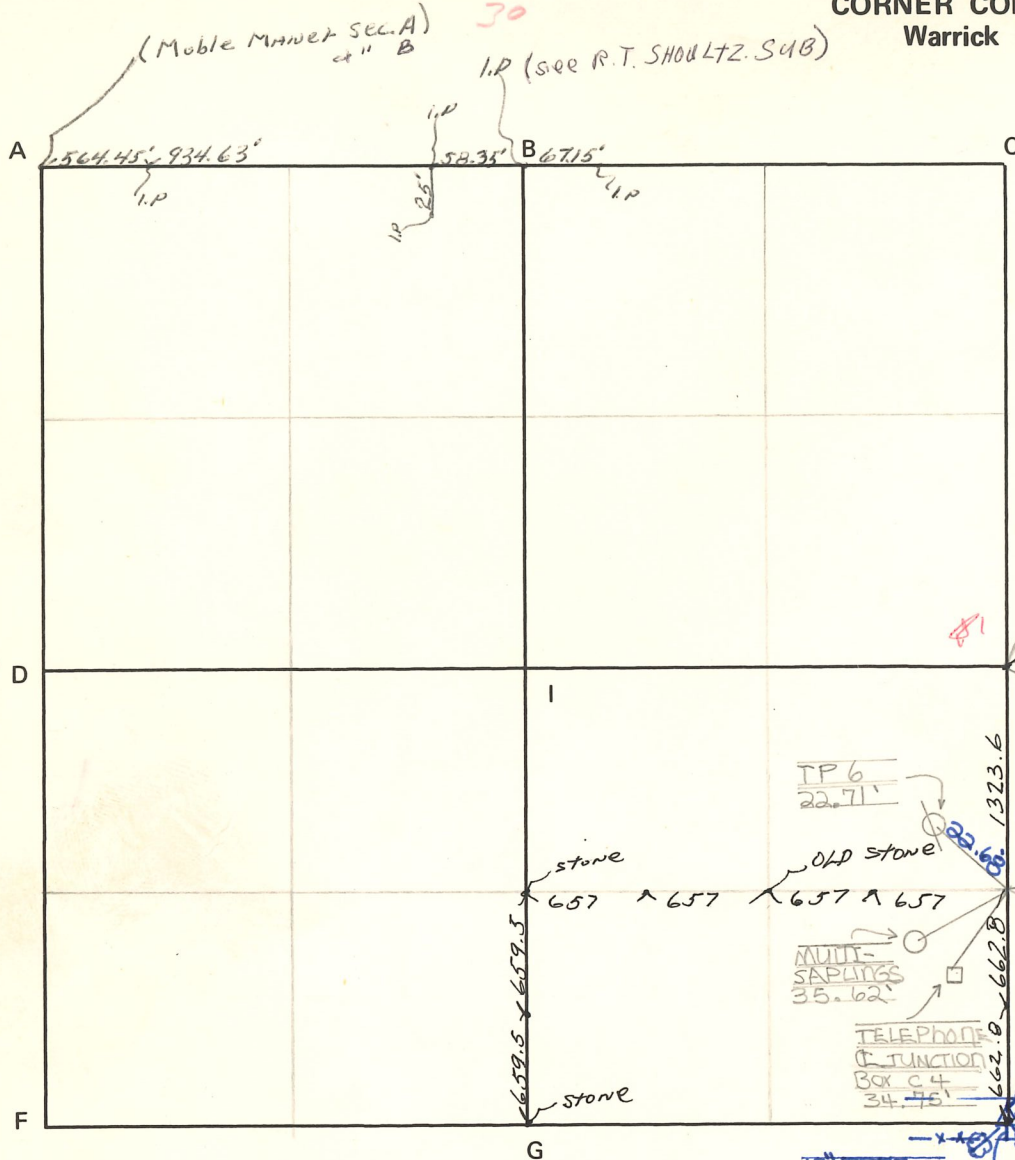
REFERENCED BY:

*Jay Beck*

DATE

4-27-84

### CORNER CODE SYSTEM Warrick County



NOTES

EUM 24"  
85.75'

Stone

TWIN 10"  
TREES  
32.52'

32

18" ASH w/  
FENCE WIRE  
32.52'

PWP  
17.94'

FND 1/2" IP  
12" Deep

FND RR SPIKE  
197/82

USED PK'S FND

TELEPHONE  
JUNCTION  
BOX C 4  
34.75'

18" TREE 28.5'

Stone

BARB WIRE N.V.  
FENCES

FND HUB + TAG  
W/ FLAGGING

6 - 6 - 8

4.5' #3

36  
5  
9

(Moble Manor Sec. A)  
2" B

30  
I.P. (SEE R.T. SHULTZ. SUB)

1564.45' 934.63'

58.35'

67.15'

IP 6  
22.71'

1323.6

22.68'

17.8'

12.9'

18" TREE  
9.69'

659.5' x 659.5'

stone

stone

stone

MULTI-SAPLINGS  
35.62'

TELEPHONE  
JUNCTION  
BOX C 4  
34.75'

FND RR SPIKE  
197/82

FND HUB + TAG  
W/ FLAGGING

USED PK'S FND

BARB WIRE N.V.  
FENCES

RECORD OF SECTION CORNERS

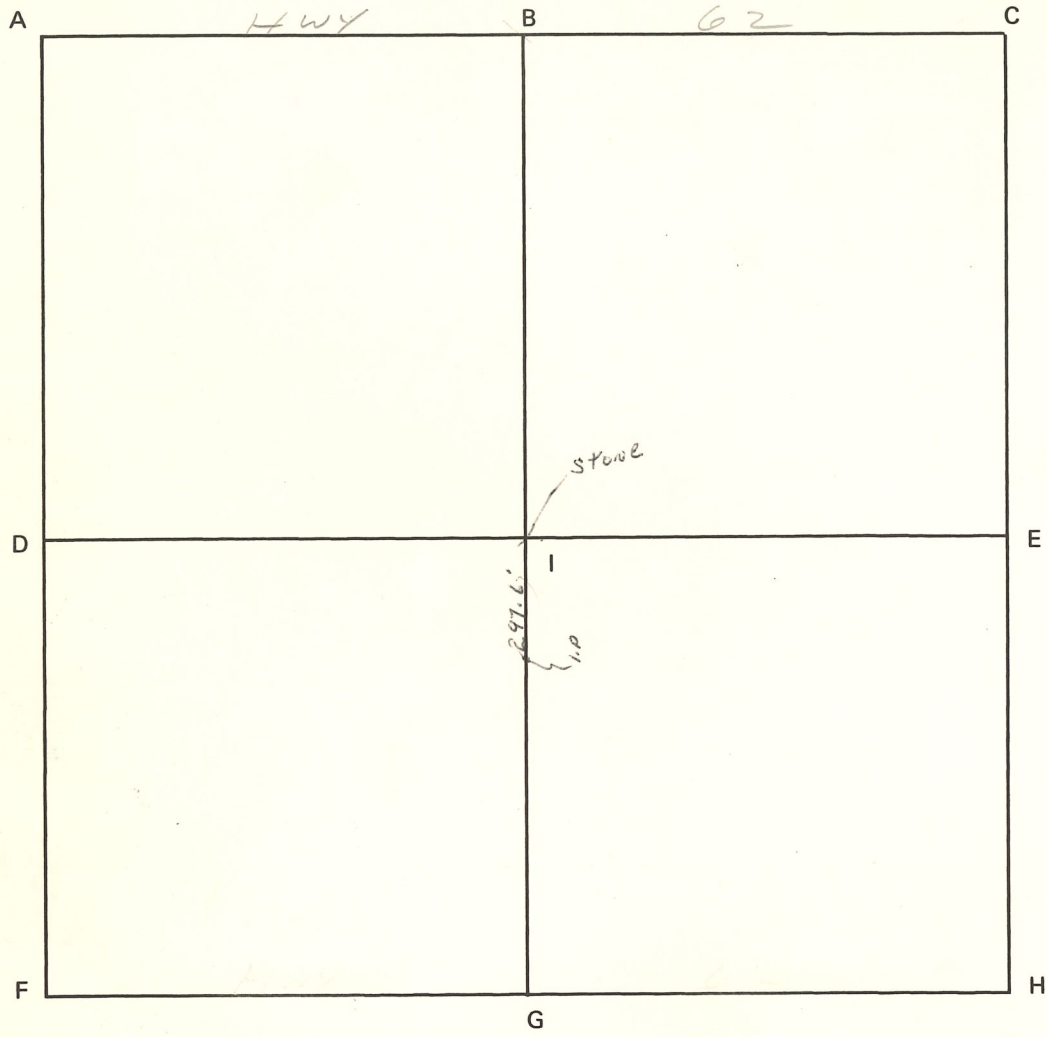
Warrick County

Section 31 Township 5 South Range 8 West 2nd Principle Meridian

Date	Cor	Location	Description of		Distance from Corner	Bearing from Corner (North Assumed)	Cond	Check By	Remarks
			Monument	Reference					
7/15/53			Iron pin						George Reynolds



CORNER CODE SYSTEM  
Warrick County



NOTES

30 29 28 27 26 25  
31 32

RECORD OF SECTION CORNERS

Warrick County

Section 32 Township 5 South Range 8 West 2nd Principle Meridian \_\_\_\_\_

Date	Cor	Location	Description of		Distance from Corner	Bearing from Corner (North Assumed)	Cond	Check By	Remarks
			Monument	Reference					
7/20/40		SW	stone						SWC

CORNER RECORD  
WARRICK COUNTY



DESCRIPTION:

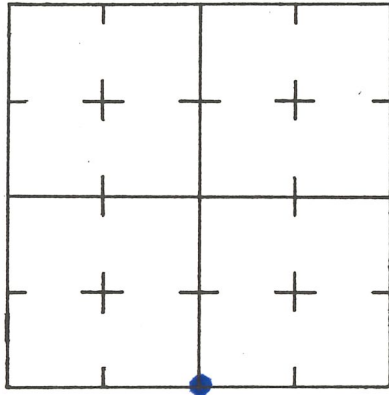
SW CORNER SW<sup>1</sup>/<sub>4</sub> SE<sup>1</sup>/<sub>4</sub>

SECTION 33, T. 5 S. R. 8 W.

2<sup>nd</sup> PRINCIPLE MERIDIAN

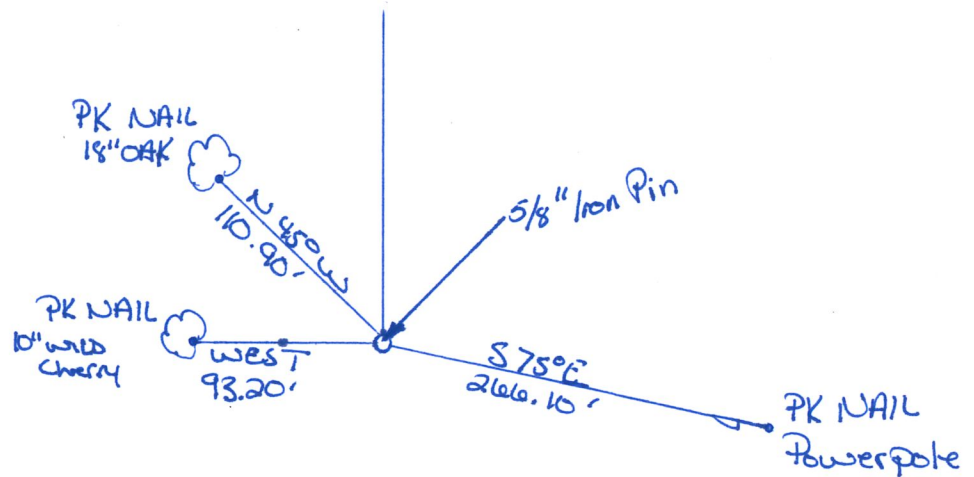
WARRICK COUNTY SURVEYOR  
KARAN HARGRAVE-BARNHILL

INDICATE CORNER REFERENCED



DESCRIBE CORNER REFERENCED

FETTER SUB  
Section "A"



STATE PLANE COORDINATE DATA

INDIANA ZONE: WEST

X \_\_\_\_\_

Y \_\_\_\_\_

ESTABLISHED BY:

APPROVED BY

DATE

REFERENCED BY:

DATE

MICHAEL F. FELD BUSCH

5-16-86

CORNER RECORD  
WARRICK COUNTY



DESCRIPTION:

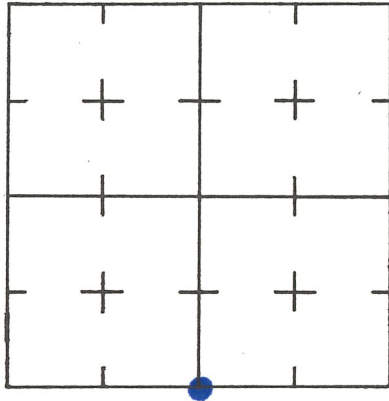
SW CORNER SW<sup>1</sup>/<sub>4</sub> SE<sup>1</sup>/<sub>4</sub>

SECTION 33, T. 5 S. R. 8 W.

2<sup>nd</sup> PRINCIPLE MERIDIAN

WARRICK COUNTY SURVEYOR  
KARAN HARGRAVE-BARNHILL

INDICATE CORNER REFERENCED



DESCRIBE CORNER REFERENCED

FETTER SUB  
Section "B" No. 2

STATE PLANE COORDINATE DATA

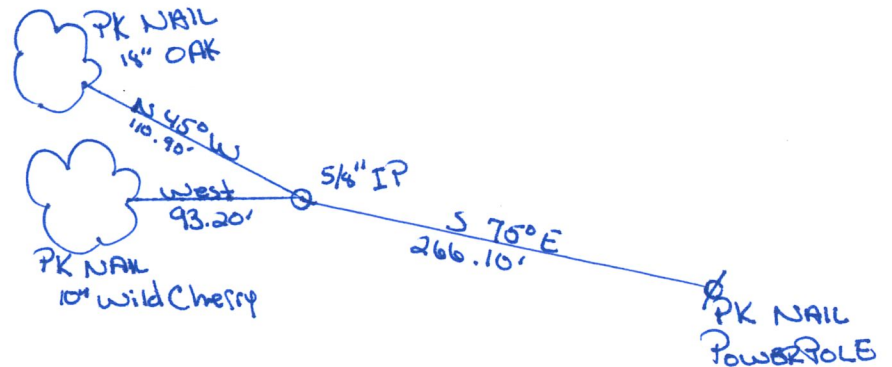
INDIANA ZONE: WEST

X \_\_\_\_\_

Y \_\_\_\_\_

ESTABLISHED BY:

\_\_\_\_\_



APPROVED BY

DATE

REFERENCED BY:

DATE

Michael F. FELDBUSCH

8-29-88

CORNER RECORD  
WARRICK COUNTY



DESCRIPTION:

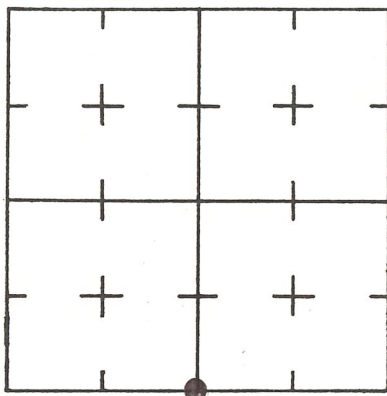
SW CORNER SW 1/4 SE 1/4

SECTION 33, T. 5 S. R. 8 W.

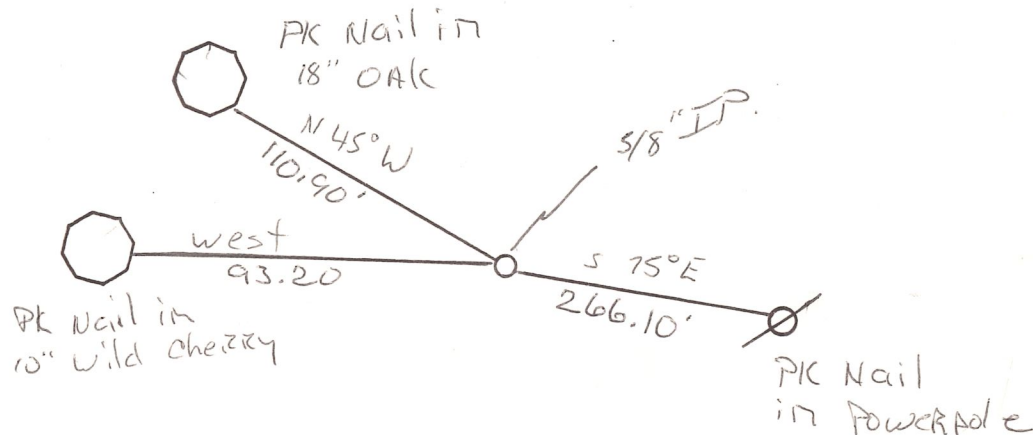
2<sup>nd</sup> PRINCIPLE MERIDIAN

WARRICK COUNTY SURVEYOR  
MICHAEL IRVIN

INDICATE CORNER REFERENCED



DESCRIBE CORNER REFERENCED



STATE PLANE COORDINATE DATA

INDIANA ZONE: WEST

X \_\_\_\_\_

Y \_\_\_\_\_

ESTABLISHED BY:  
\_\_\_\_\_

APPROVED BY

DATE

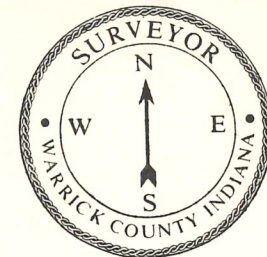
REFERENCED BY:

DATE

Mike Feldbusch

Nov 9<sup>th</sup> 1988

CORNER RECORD  
WARRICK COUNTY



DESCRIPTION:

SW CORNER NW<sup>1</sup>/<sub>4</sub> NE<sup>1</sup>/<sub>4</sub>

SECTION 34, T. 5 S.

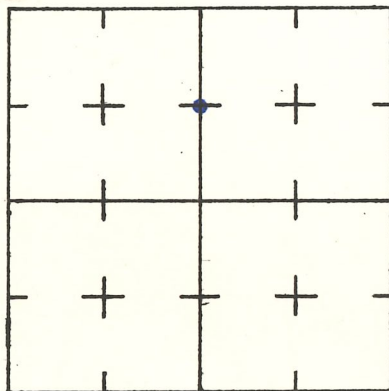
R. 8 W.

2<sup>nd</sup> PRINCIPLE MERIDIAN

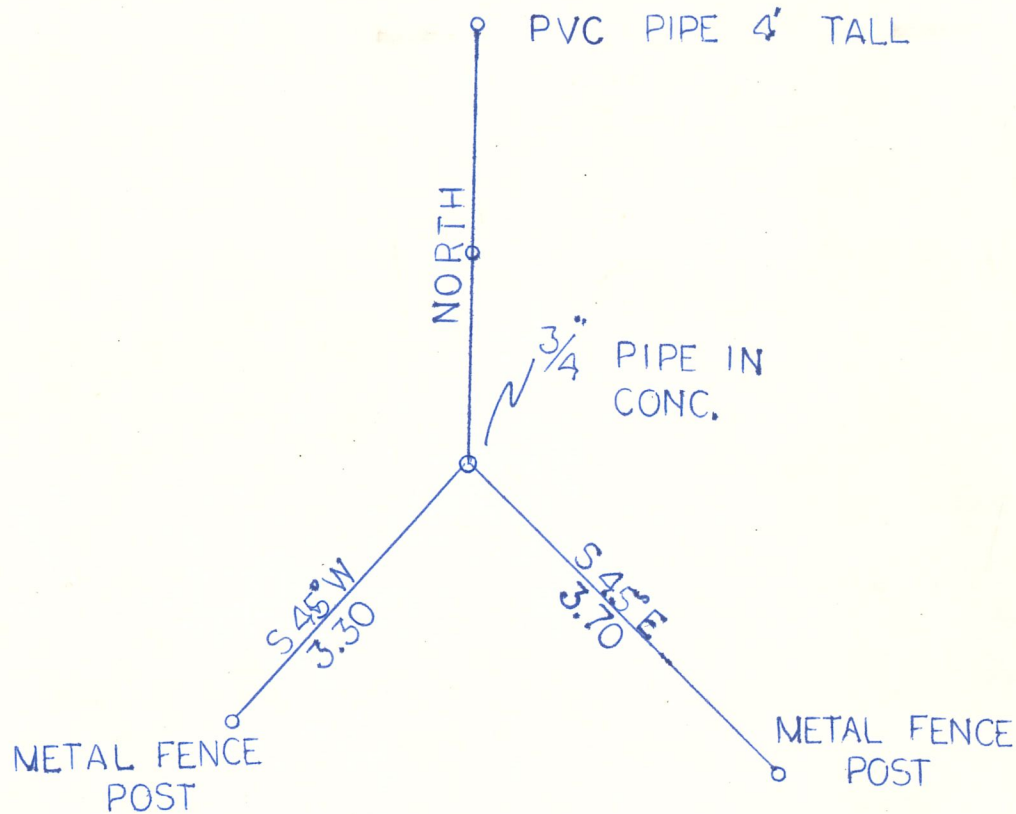
WARRICK COUNTY SURVEYOR

MICHAEL IRVIN

INDICATE CORNER REFERENCED



DESCRIBE CORNER REFERENCED



STATE PLANE COORDINATE DATA

INDIANA ZONE: WEST

X \_\_\_\_\_

Y \_\_\_\_\_

ESTABLISHED BY:

\_\_\_\_\_

APPROVED BY

M. FELDBUSCH

DATE

L.S. 50459

REFERENCED BY:

M. FELDBUSCH

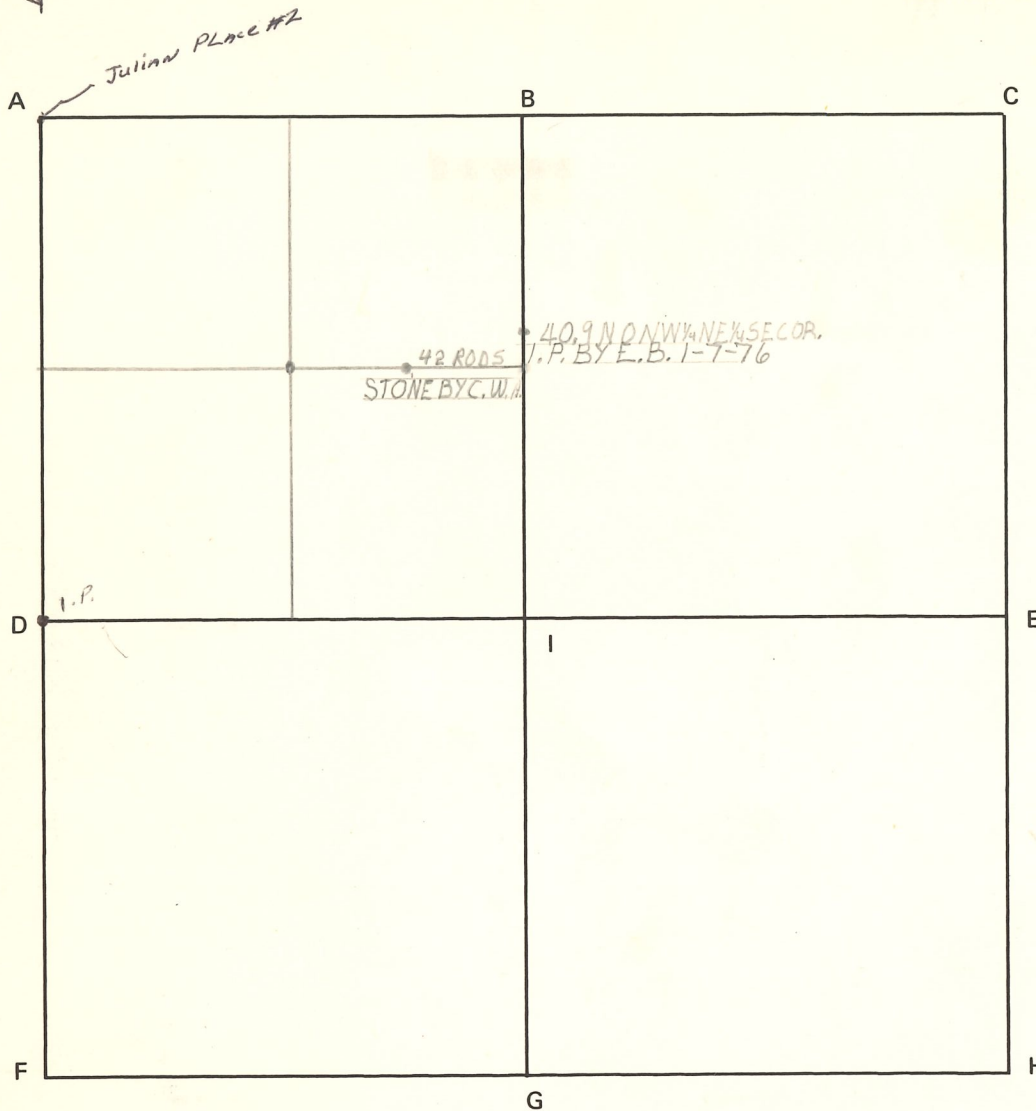
DATE

5/87

W 300 RD.

Section 34 Township 5 South Range 8 West 2nd P

CORNER CODE SYSTEM  
Warrick County



HWY 62

NOTES

# RECORD OF SECTION CORNERS

Warrick County

34

Township 5 South

Range 8 West

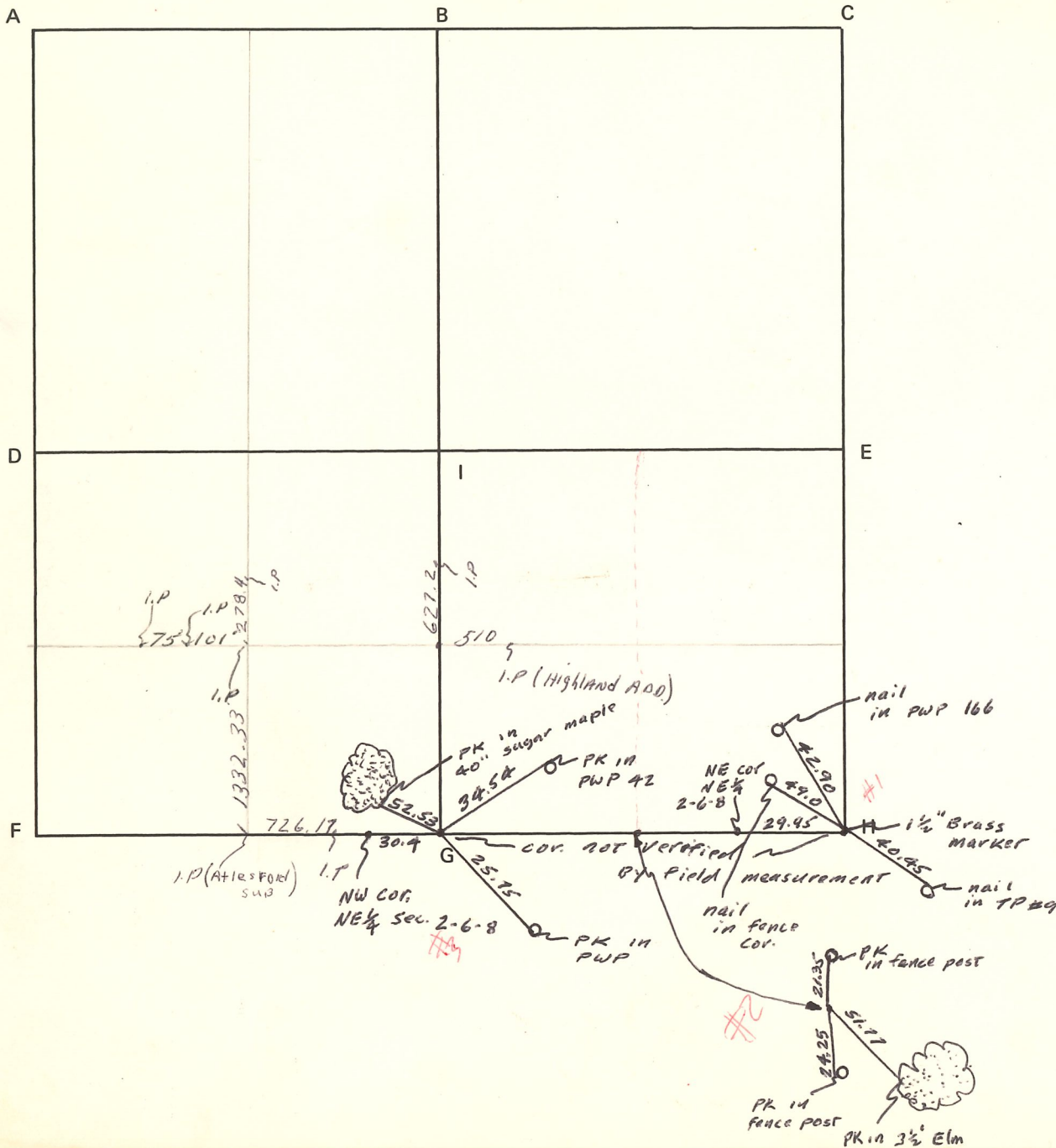
2nd Principle Meridian

Date	Cor	Location	Description of		Distance from Corner	Bearing from Corner (North Assumed)	Cond	Check By	Remarks
			Monument	Reference					
5/21/73	D		iron pin	T.P. 1/62 T.P. #31/2 PWP	87.5 62.2 47.0				SWC in E. 300 rd



CORNER CODE SYSTEM  
Warrick County

NOTES



RECORD OF SECTION CORNERS

Warrick County

Section 35 Township 5 South Range 8 West 2nd Principle Meridian

Date	Cor	Location	Description of		Distance from Corner	Bearing from Corner (North Assumed)	Cond	Check By	Remarks
			Monument	Reference					
7/13/53		SE cor.	iron pin NW-SW						George Reynolds

CORNER RECORD  
WARRICK COUNTY

DESCRIPTION:

SE CORNER SW<sup>1</sup>/<sub>4</sub> SW<sup>1</sup>/<sub>4</sub>

SECTION 35, T. 5 S.

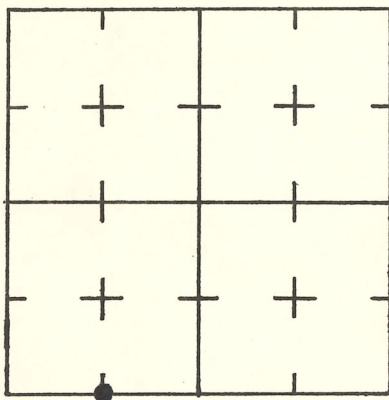
R. 8 W.

2<sup>nd</sup> PRINCIPAL MERIDIAN

WARRICK COUNTY SURVEYOR  
MICHAEL F. FELDBUSCH, L.S.

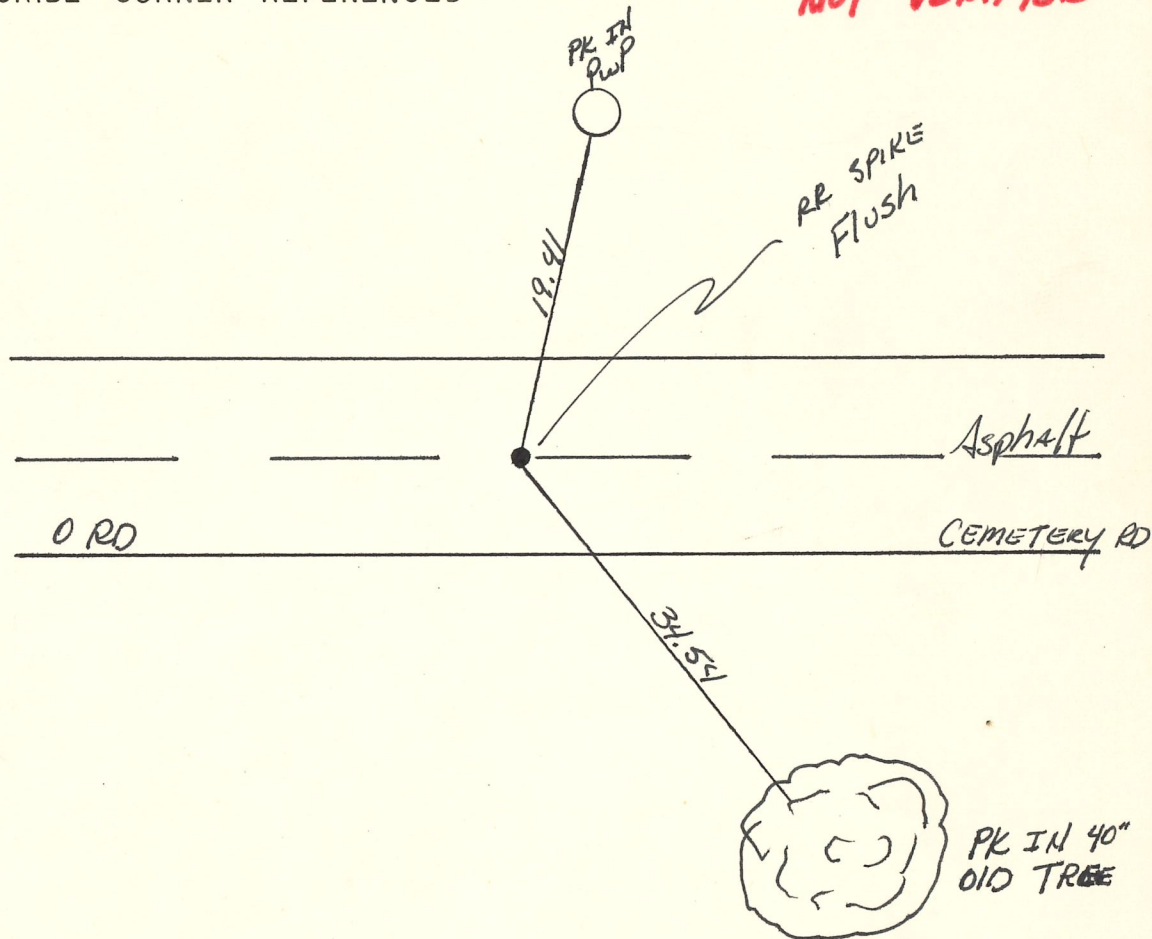


INDICATE CORNER REFERENCED



DESCRIBE CORNER REFERENCED

**NOT VERIFIED**



STATE PLANE COORDINATE DATA

INDIANA ZONE: WEST

X \_\_\_\_\_

Y \_\_\_\_\_

ESTABLISHED BY:

APPROVED BY

DATE

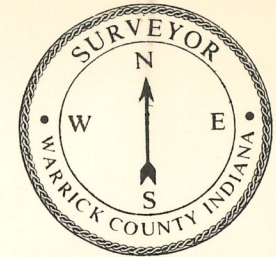
REFERENCED BY:

DATE

*Jay Beck*

3-29-84

CORNER RECORD  
WARRICK COUNTY



DESCRIPTION:

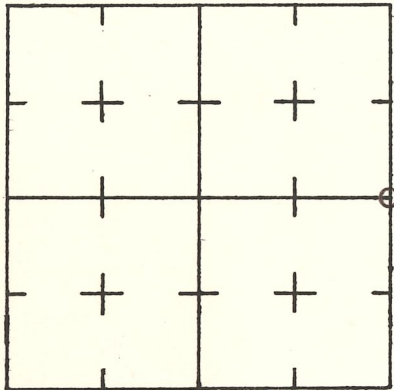
SE CORNER SE 1/4 NE 1/4

SECTION 36, T. 5 S. R. 8 W.

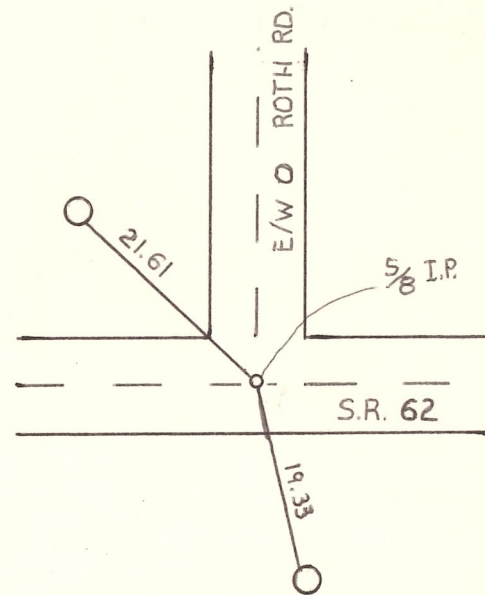
2<sup>nd</sup> PRINCIPLE MERIDIAN

WARRICK COUNTY SURVEYOR  
MICHAEL IRVIN

INDICATE CORNER REFERENCED



DESCRIBE CORNER REFERENCED



STATE PLANE COORDINATE DATA

INDIANA ZONE: WEST

X \_\_\_\_\_

Y \_\_\_\_\_

ESTABLISHED BY:

\_\_\_\_\_

APPROVED BY

DATE

REFERENCED BY:

G. B.

DATE

9-19-84

CORNER RECORD  
WARRICK COUNTY



DESCRIPTION:

NE CORNER SE 1/4 NE 1/4

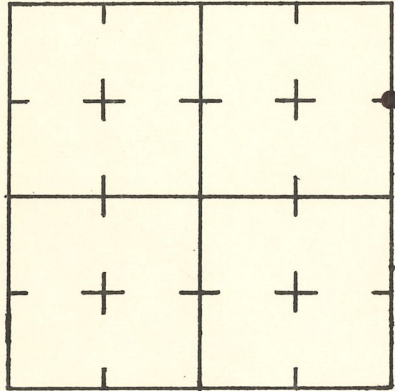
SECTION 36, T. 5 S.

R. 8 W.

2<sup>nd</sup> PRINCIPAL MERIDIAN

WARRICK COUNTY SURVEYOR  
MICHAEL F. FELDBUSCH, L.S.

INDICATE CORNER REFERENCED



DESCRIBE CORNER REFERENCED

NOT VERIFIED

PK IN  
PWP # W 73  
MIN



28'

E.O.R.D

5/8" IP

STATE PLANE COORDINATE DATA

INDIANA ZONE: WEST

X \_\_\_\_\_

Y \_\_\_\_\_

ESTABLISHED BY:

APPROVED BY

DATE

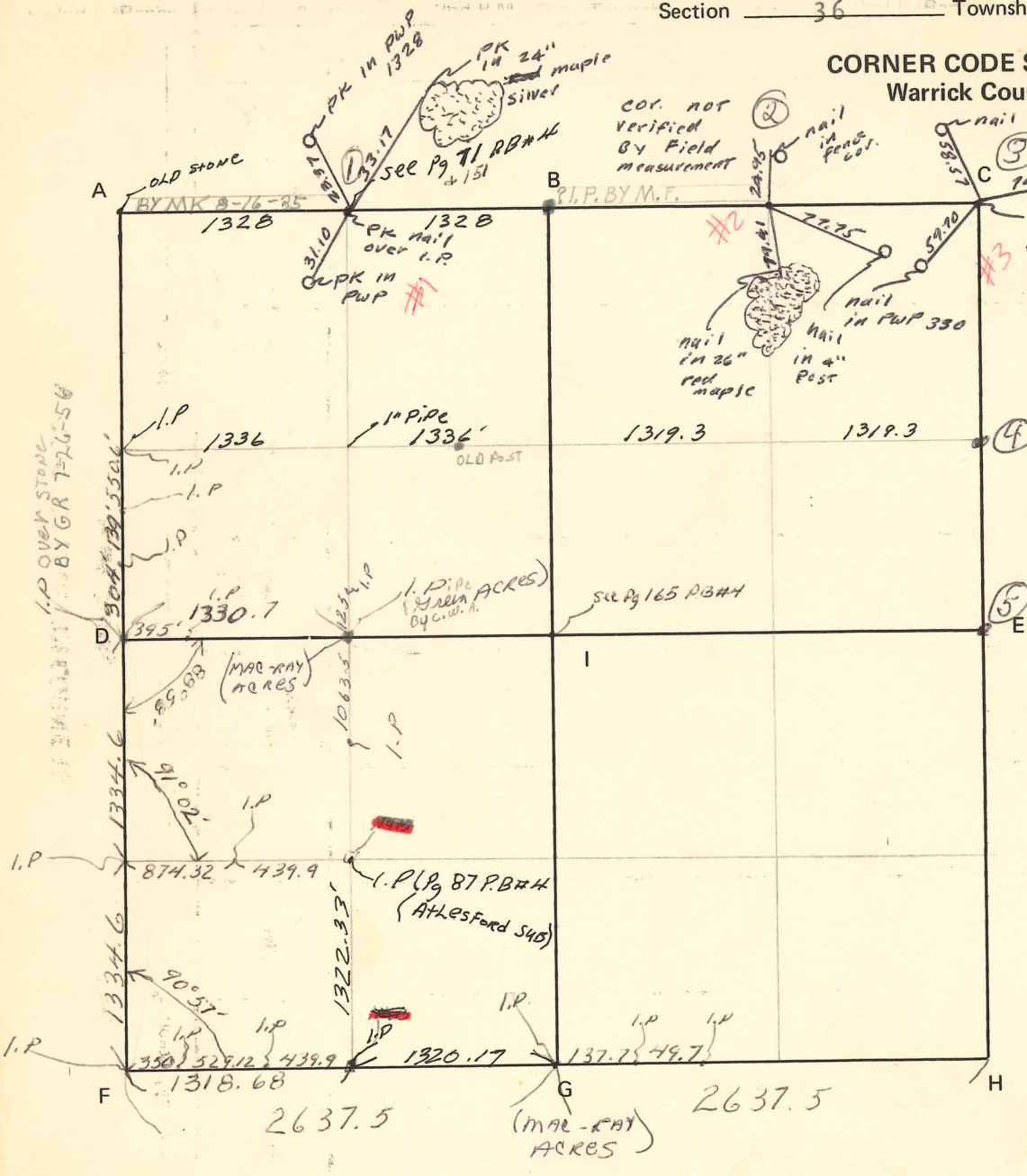
REFERENCED BY:

DATE

*Gary Beck*

5-9-84

### CORNER CODE SYSTEM Warrick County



### NOTES

- D) F.A.D. 2" I.P.  
M.F. (DEC. 15, 1982)

# RECORD OF SECTION CORNERS

Warrick County

Section 36 Township 5 South Range 8 West 2nd Principle Meridian

Date	Cor	Description of		Distance from Corner	Azimuth from Corner (North Assumed)	Cond	Check By	Remarks
		Monument	Reference					
7/24/50	A							George Reynolds
	nw cor	stone						
	B							
	C							
	D							CW Abbot 1946
		ron pin						
	E							
	F							CW Abbot 1946
		iron pin						
	G							
7/7/54	H							George Reynolds
	I							